



## An illustrated weevil checklist of some collecting trips to Sardinia

by  
**Peter E. Stüben**<sup>1</sup>  
with 290 illustrations

Manuscript received: 05. December 2022  
Accepted: 28. December 2022  
Internet (open access, PDF): 01. March 2023

<sup>1</sup>CURCULIO-Institut, Hauweg 62, 41066 Mönchengladbach, Germany, [P.Stueben@t-online.de](mailto:P.Stueben@t-online.de)

**Abstract.** Focus stacking images are given for **254** Curculionoidea, species and subspecies, from Sardinia - in many cases with additional illustrations. The focus is on three objectives: 1. to provide visual identification aids for beginners, 2. to give specialists the ability to verify checklists for correct species identifications and 3. to create the prerequisites for a more extensively automated image recognition, as has been provided by the algorithms of artificial intelligence research for several years. Collection, ecological, host plants and overall distribution data are presented for all taxa, and mtCO1 barcodes were compiled and entered into GenBank for about a quarter of the species. Some species that are perhaps new or new to Sardinia, rare or rediscovered are presented and discussed. Selected examples: *Lepidapion sardoum* (Schatzmayr, 1933) stat. nov., *Mogulones cf. geographicus* (Goeze, 1777), *Amaurorhinus cf. sardous* Folwaczny, 1972, *Acallorneuma sardiniense osellai* Magrini & Paladini, 2017, *Torneuma curtulum vastum* Stüben, 2007 stat. nov., *Dorytomus cf. taeniatius / dejeani* (Fabricius, 1781), *Bradybatus fallax* Gerstaecker, 1860, *Miarus afer* Daniel, 1912, *Exomias metallicus* (Stierlin, 1868), *Otiorhynchus alutaceus* (Germar, 1817), *Otiorhynchus parvicollis* Gyllenhal, 1834, *Polydrusus cervinus* (Linné, 1758), *Larinus jaceae* (Fabricius, 1775), *Derosasius cf. damryi sardous* Osella, 1977, *Raymondellus cf. doderoi* Gangelbauer, 1906 and *Raymondellus cf. vignai* Osella, 1977. Most of the weevil species in this illustrated weevil checklist were found on the annual excursion of the members of the Curculio Institute in May 2022 and on several excursions to Sardinia by the author in the years before.

**Keywords.** Attelebidae, Rhynchitidae, Brentidae, Apioninae, Nanophyinae, Curculionidae, Brachycerinae, Ceutorhynchinae, Baridinae, Cossoninae, Cryptorhynchinae, Curculioninae, Cyclominae, Entiminae, Hyperinae, Lixinae, Mesoptiliinae, Raymondionymidae, morphology, faunistics, host plants, integrative taxonomy, morphology barcoding, macrophotography, focus stacking, Italy, Sardinia.

### Introduction

The following illustrated weevil checklist of Sardinia includes **254** (sub)species. Most of them were collected by the author during four visits to the island in 2004/5, 2010 and 2022. During the first three research trips, ground-active weevils, especially Cryptorhynchinae and Peritilini, were almost exclusively collected and sieving was the primary technique utilised. On the last visit, a joint excursion with members of

the Curculio Institute from 9 to 15 May 2022 near Cala Gonone (located in the middle of the east coast of Sardinia at the Golfo di Orosei), additional species were collected by me by beating trees and shrubs. As far as I was able, the records of my colleagues Roberto Casalini, I-Roma, Stefan Wartmann, CH-Basel, and Rüdiger Jacob, D-Engen (Photo 1) have also been included. My extended stay on the island from 4 to 22 May 2022 included day excursions around Villasalto in the south-east and around Berchiddedu in the north-east of Sardinia.



Participants of the excursion to Sardinia in May 2022 (from left to right): Cesare Bellò, Peter E. Stüben, Rüdiger Jacob, Andreas Link, Roberto Casalini, Leonardo Forbicioni, Esther Ockermüller (with the weevil-sniffing dog "Barney"), Stefan Wartmann, Maria S. Chemello and Margerita Atorino (photo: Regine Stüben).

Unlike illustrated faunal lists, pure binomial checklists do not offer the possibility of verifying species determinations for their correctness. This illustrated weevil checklist is a first step in adding visual possibilities to the previous checklists, travel reports and excellent faunistic accounts (e.g. Abbazzi et al. 1995, Germann 2005, Colonnelli & Osella 2009, Abbazzi & Maggini 2009, Colonnelli et al. 2011) of Sardinia to give interested entomologists initial identification aids. Binomials in catalogues, genus name and epithet alone, are helpful, but they do not reveal anything about the appearance of the collected insect, neither to the interested beginner nor to the taxonomist or systematist. They force us to more or less time-consuming study of the literature that is often difficult to access, the identification keys that are often difficult to understand because they are rarely sufficiently illustrated, or a visit to one of our museums.

However, digital images processed by focus stacking, along with the supplementary illustrations presented here, are not only intended to be a first shortcut on the arduous path to correct species identification, they also aim to ensure significantly more transparency in species identification itself. We cannot be certain that the mere listing of binomials is also preceded by correct species identification. After all, with more than 600 Sardinian weevil species and sub-species, even specialists of a species group, can sometimes be wrong! Illustrations, whether traditionally provided with an ink pen or with high-resolution layered photographs, provide the opportunity for verification and falsification, giving critics a chance, for the first time ever, to scrutinize the species determinations presented and, if necessary, also to question them! This is more important today than ever, since in view of the undoubtedly impressive molecular revolution in taxonomy, morphological knowledge is being pushed back further and further (and, in some exaggerated claims by molecular biologists, is immediately declared superfluous). But without this knowledge of species (ultimately even in comparison with the 'historical' type material), DNA barcoding as a taxonomic method for species re-identification is of no help to us and - after faulty determination - is already leading us down the wrong track in the relevant Gene Banks (Mulcahy et al. 2022).

It would be desirable to image all Western Palearctic weevils - not only those of Sardinia - in this way, to visually capture variations of the species and to provide further detailed images of the significant features. However, images cannot replace the search for evolutionary relationships, as it is not (currently) possible to distinguish between homologies and convergences. Therefore, DNA barcodes as well as Whole Genome Sequencing from the imaged specimens could permanently supplement this image information (see: Meierotto et al. 2019, Sharkey et al. 2021), so the molecular biologists and phylogeneticists among us would also benefit.

**Preliminary remark:** In the following checklist, I have deliberately refrained from including all the previously known records from Sardinia. Thus, for each illustration there is only one exact locality record. The focus should be on the scientific illustrations of the species and - as far as possible in this context - the (re)identification of the specimens (also based on additional illustrations), which is so important for the collector and specialist. Whereas 2, 3 or 4 records say little about the actual distribution of a species, it would take a team of recorders many decades to achieve a complete mapping of all weevil species in Sardinia. An idea that may seem tempting in Northern or Central Europe for a defined nature reserve due to the far lower number of species, but it is unlikely to be effective when weighing up the effort and the gain in knowledge for the much larger numbers of species that we are dealing with in the Mediterranean region. There are already significantly more effective methods for this (e.g. eDNA Metabarcoding, Next-Generation Sequencing; see: Lafage et al. 2020, Krehenwinkel et al. 2022). On the other hand, it would be much more important to learn more about the plant host plants of the mono- and oligophagous weevils and their developmental stages, the larvae and pupae. In short: A little less faunistics and a little more biology.

The specimens illustrated here were mainly identified by the author himself and deposited in his collection. A few identifications were contributed by the following colleagues: Roberto Caldara (Curculioninae), Jiri Krátký (Ceutorhynchinae), Helio Pierotti (Peritelini), Roman Borovec (Entiminae) and Karel Schön (Apionidae). My special thanks go to them. Where the identification was done by another colleague, this is mentioned after the details of the record. The mtCO1 barcodes were compiled by the author and entered into GenBank for about a quarter of the species. They will be available for everyone from the end of 2023 and exclusively concern specimens that were collected in Sardinia - usually by the author. Likewise, with a few exceptions, all illustrations come from the author. Specimens that were not collected by the author are in the collections of those colleagues who found them in Sardinia.

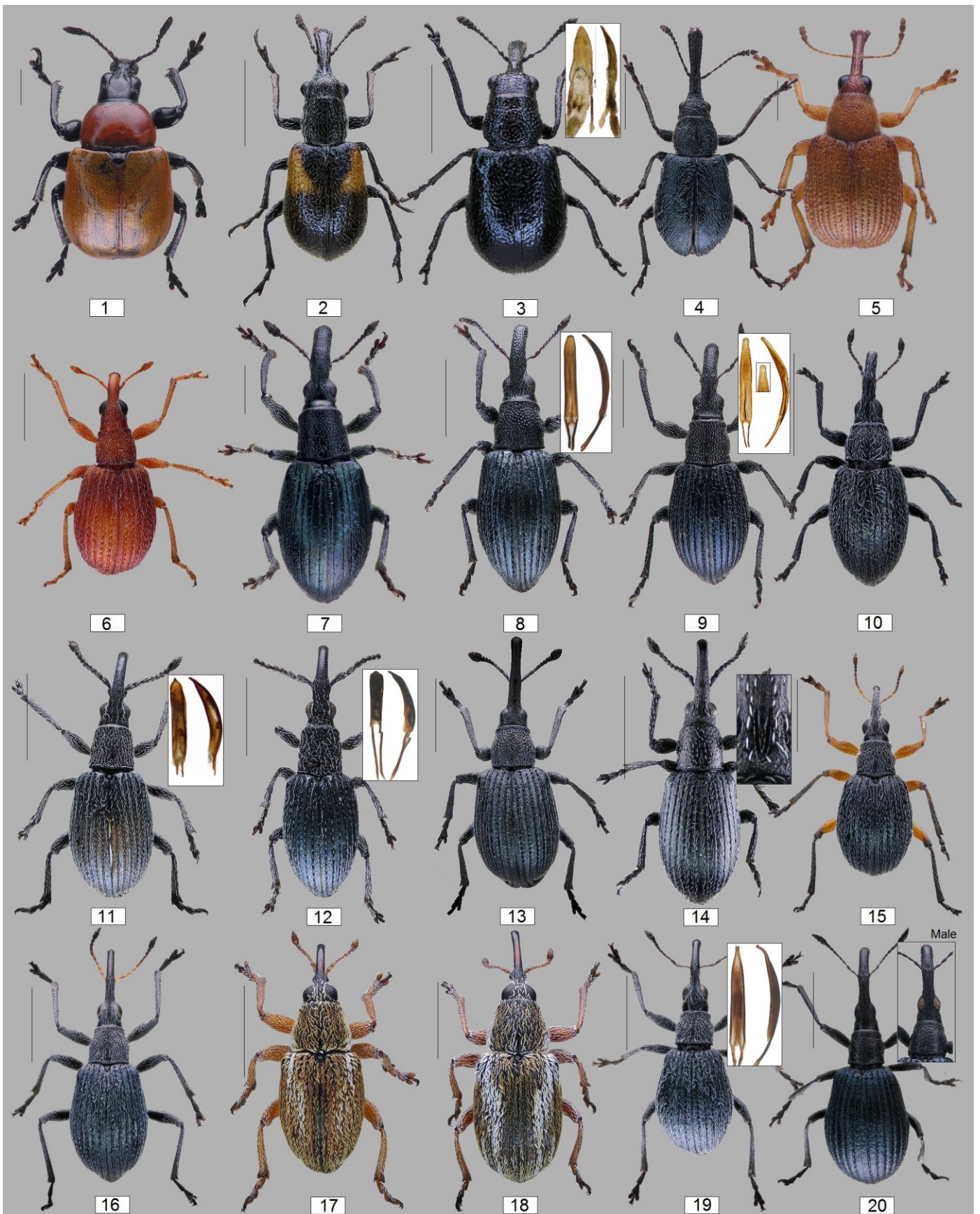
## Discussion

Focus stacking images for **254** Curculionoidea of Sardinia, species and subspecies, in many cases with additional illustrations, have been provided here primarily for internet presentation (with the possibilities of digital magnification). Three targets are aimed at. 1. to provide visual identification aids for beginners, 2. to give specialists and the opportunity to verify checklists for correct identifications and 3. to create the prerequisites for a more extensively automated image recognition, as has already been provided by the algorithms of artificial intelligence research for several years.

The latter is becoming increasingly important. Insect identification courses and taxonomy in the broadest sense are hardly held at any university these days. There are, they say succinctly, more important things to transfer into the students' brains in the short term. At the same time, species extinction and the extinction of species experts seem to accelerate the process of alienation from nature. Digital, virtual worlds are taking its place. They are quickly made, commit us to nothing and are arbitrarily interchangeable. In contrast to this, the natural world presents us with vital challenges. As individuals, we are used to encountering it with an often decades-long immersion in the biodiversity of our planet, primarily in taxonomic research. But do we even have the time for this - and who would still be prepared to lead such an ascetic life of research as in the past?

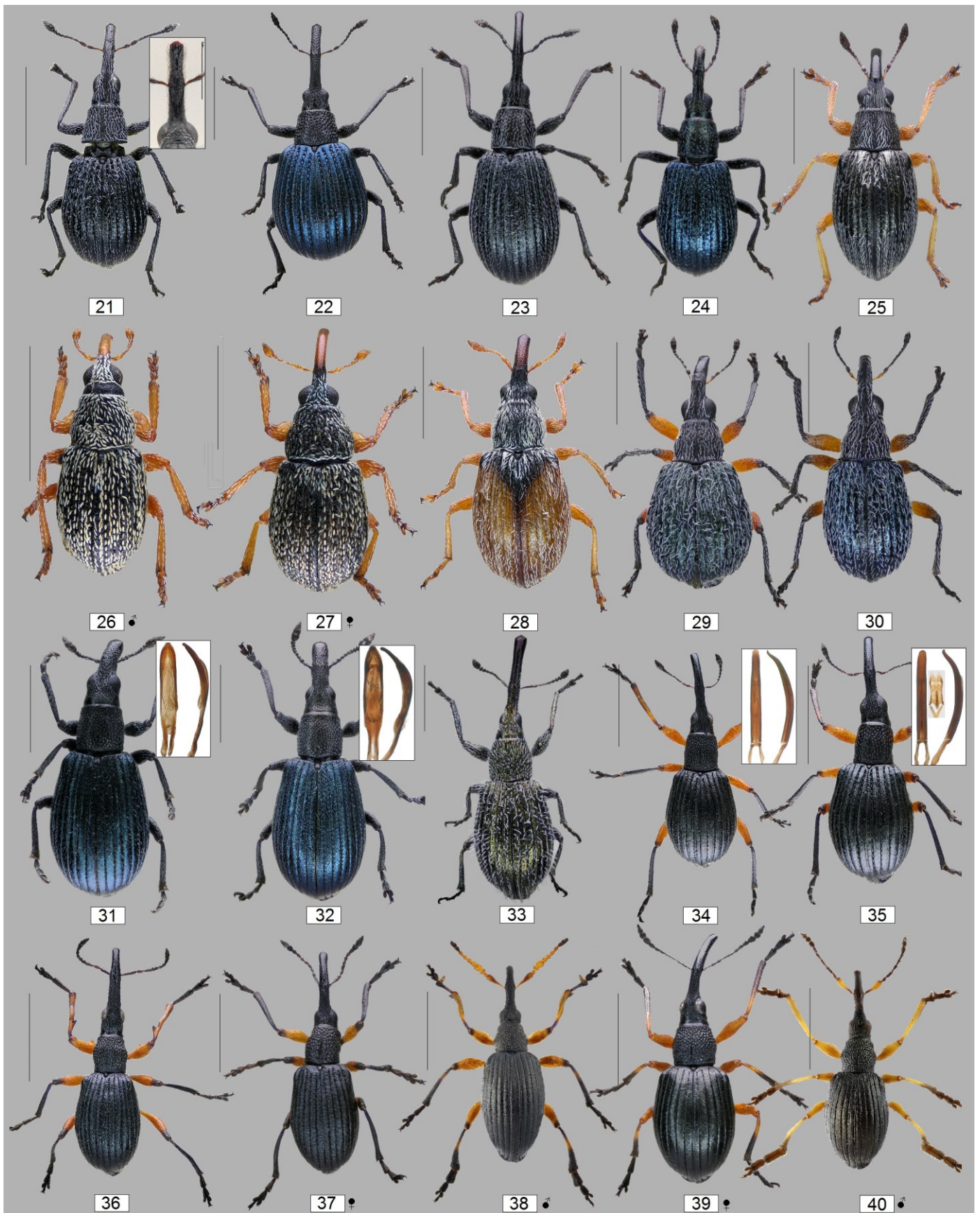
Some of us have recognised this and are beginning to reacquire species knowledge using image recognition techniques (most recently using the already very powerful Apps in botany, ornithology or lepidopterology). The new motto here is: "Mit Artenkenntnis zu mehr Artenvielfalt" (West German Entomologists' Day, 19 November 2022, Düsseldorf). **Citizen Science** is becoming a place of learning where everyone can use modern, visual information systems to quickly find their way around and make their contribution to the Red List of Threatened Species. Citizen science, spread over many shoulders, has long since mutated into big-data knowledge about tomorrow's butterfly populations in the annual surveys undertaken by nature conservation associations. Those who still smiles at this should, above all as taxonomists, take a good look at and ask themselves what social mission they actually fulfilled during their lifetime with their mere 1-2 dozen genus revisions! Better to pass on species knowledge in all its breadth and diversity, to compare it with the knowledge and binomials of long-gone generations of researchers and to record this tradition in **meaningful pictures** (and not again and again in long-winded species descriptions). He can then confidently leave the rest to computer scientists and artificial intelligence research (with the exception of interim checks).

In this sense, I would be pleased if this still very inadequate contribution to the weevils of Sardinia (especially with regard to the additional image information) would encourage a visual appreciation of the other Curculionoidea regions of Europe - especially the fragile Mediterranean islands.

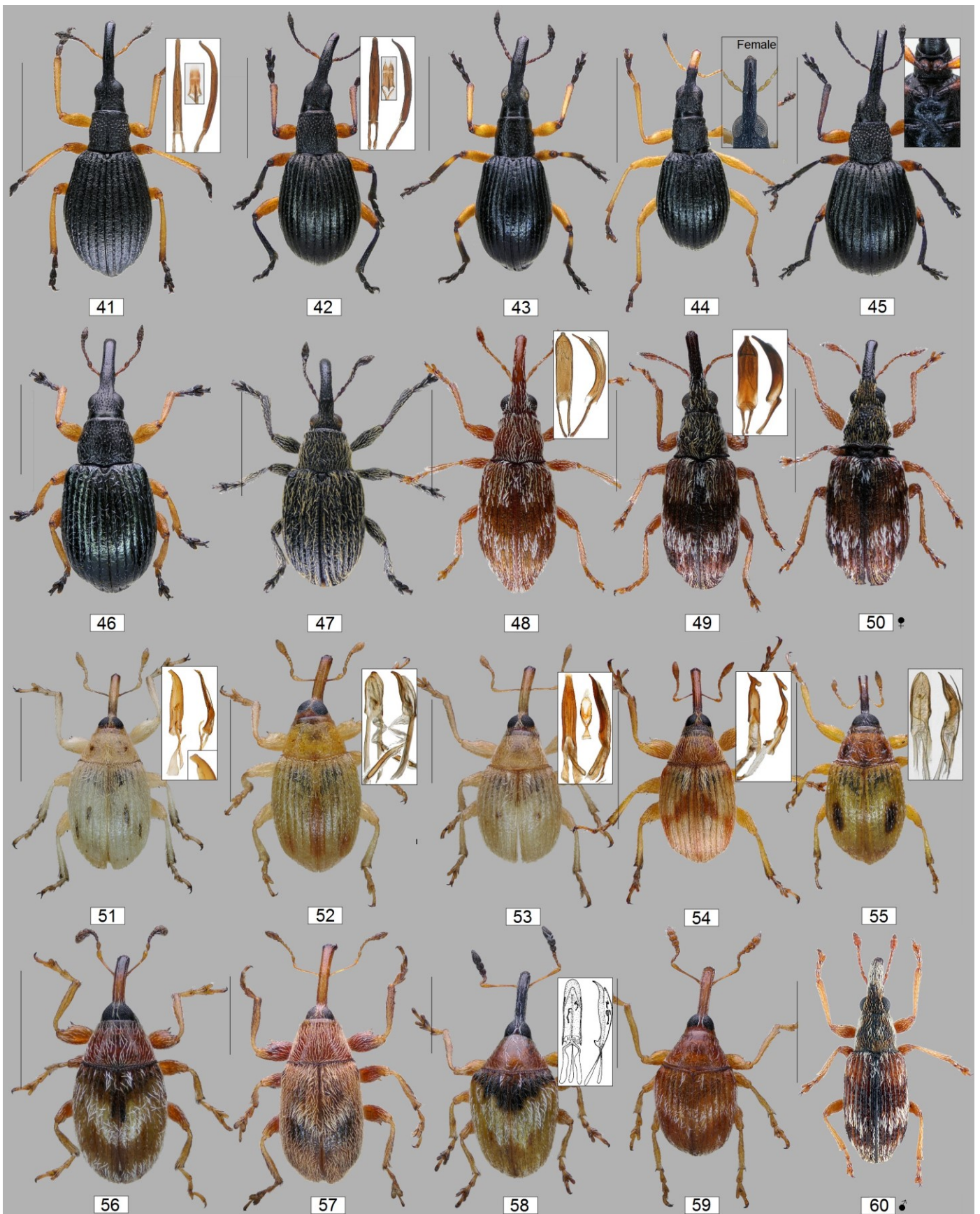


1. *Attelabus nitens*, 2. *Aletinus maculipennis*, 3. *Eomesauletes politus*, 4. *Mesauletobius pubescens*, 5. *Rhodocyrtus cribripennis*, 6. *Apion haematodes*, 7. *Aspidapion aeneum*, 8. *A. radiolus*, 9. *A. cf. caprai*, 10. *Catapion corsicum*, 11. *Ceratapion gibbirostre*, 12. *C. s. scalptum*, 13. *Cistapion cyanescens*, 14. *Diplapion confluens*, 15. *Eutrichapion viciae*, 16. *E. vorax*, 17. *Exapion fulvum*, 18. *E. subparallelum*, 19. *Hemitrichapion pavidum*, 20. *Holotrichapion gracilicolle*. (Scale: 1 mm).

© P.E. Stüben/CURCI

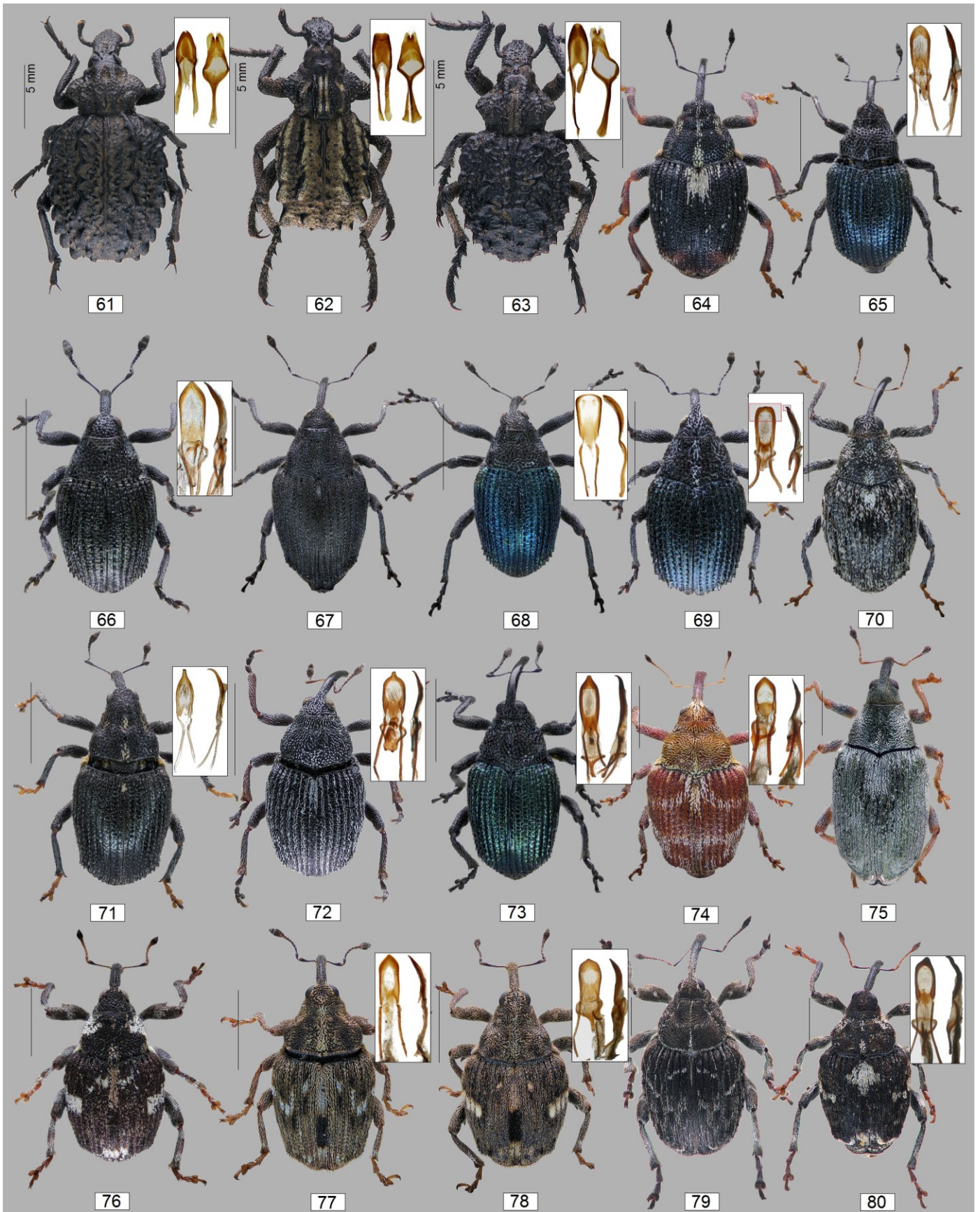


21. *Holotrichapion ononis*, 22. *H. pisi*, 23. *Ischnopteration modestum*, 24. *I. virens*, 25. *Kalcapion semivittatum*, 26/27. *Lepidapion sardoum*, 28. *Malvapion malvae*, 29. *Oryxolaemus croceifemoratus*, 30. *O. scabiosus*, 31. *Perapion hydrolapathi*, 32. *P. violaceum*, 33. *Phrissotrichum tubiferum*, 34. *Protapion angusticolle*, 35. *P. apricans*, 36. *P. dentipes*, 37/38. *P. difforme*, 39/40. *P. dissimile*. (Scale: 1 mm).

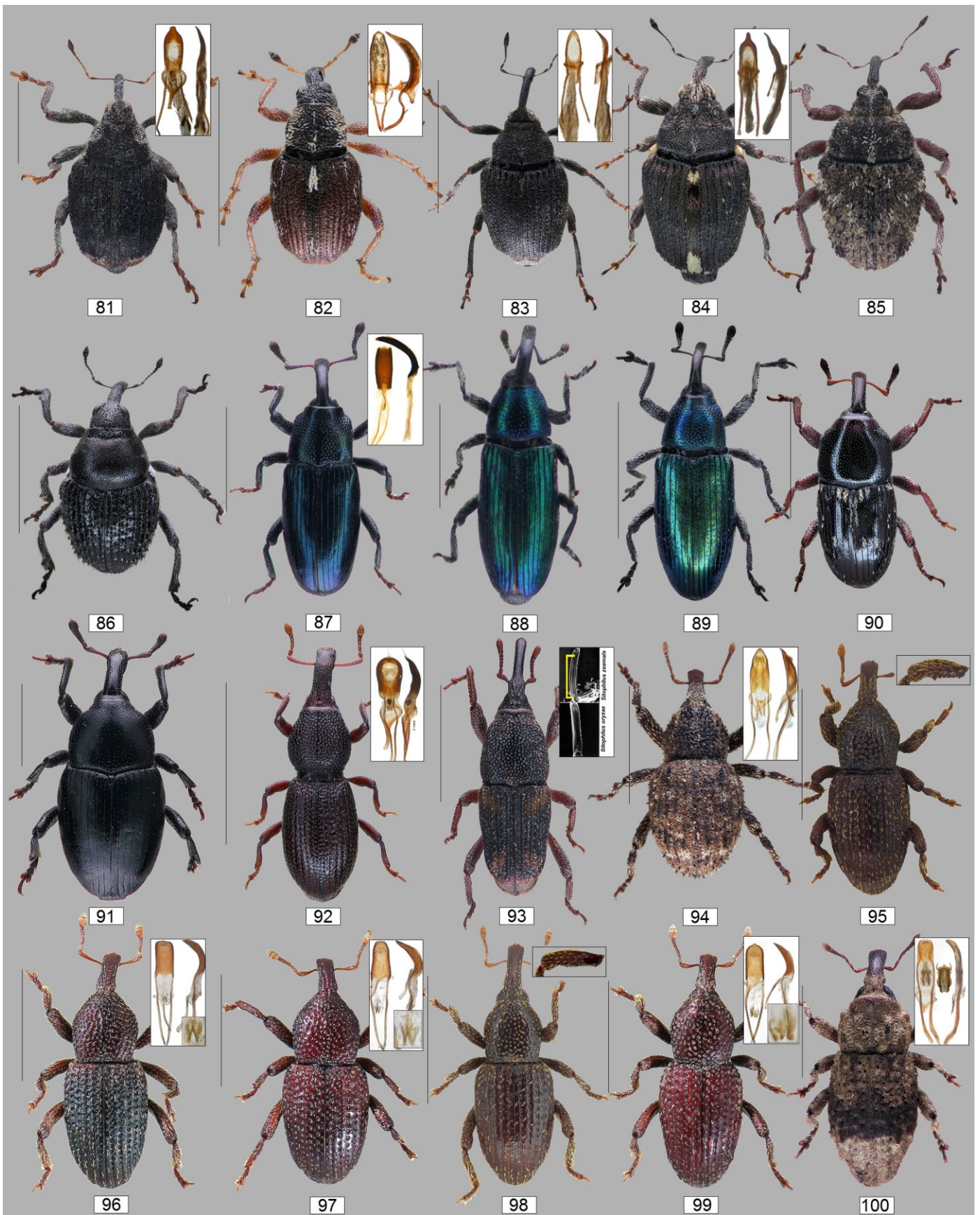


41. *Protapion fulvipes*, 42. *Protapion interjectum*, 43. *Protapion laevicolle*, 44. *Protapion nigritarse*, 45. *Protapion trifolii*, 46. *Pseudapion rufirostre*, 47. *Squamapion consors consors*, 48. *Taeniapion rufescens*, 49. *Taeniapion rufulum*, 50. *Taeniapion tyrrhenicum* (female), 51. *Allomalina quadrivirgata*, 52. *Corimalia postica*, 53. *C. pallida*, 54. *C. tamarisci*, 55. *Hypophyes pallidulus*, 56. *Dieckmanniellus nitidulus*, 57. *Nanodiscus transversus*, 58. *Nanomimus hemisphaericus*, 59. *Nanophyes rubricus*, 60. *Taeniapion tyrrhenicum* (male). (Scale: 1 mm).

© P.E. Stüben/CURCI



61. *Brachycerus barbarus*, 62. *B. albidentatus*, 63. *B. muricatus*, 64. *Calosirus terminatus*, 65. *Ceutorhynchus chalybaeus*, 66. *C. contractus*, 67. *C. duvali*, 68. *C. erysimi*, 69. *C. leprieuri*, 70. *C. pallidactylus*, 71. *C. picitarsis*, 72. *C. typhae*, 73. *C. viridipennis*, 74. *Coeliodes transversealbifasciatus*, 75. *Drupenatus nasturtii*, 76. *Hadroplontus trimaculatus*, 77. *Microplontus melanostigma*, 78. *Microplontus nigrovittatus*, 79. *Mogulones cf. geographicus*, 80. *Mogulones peregrinus*. (Scale: 1 mm).



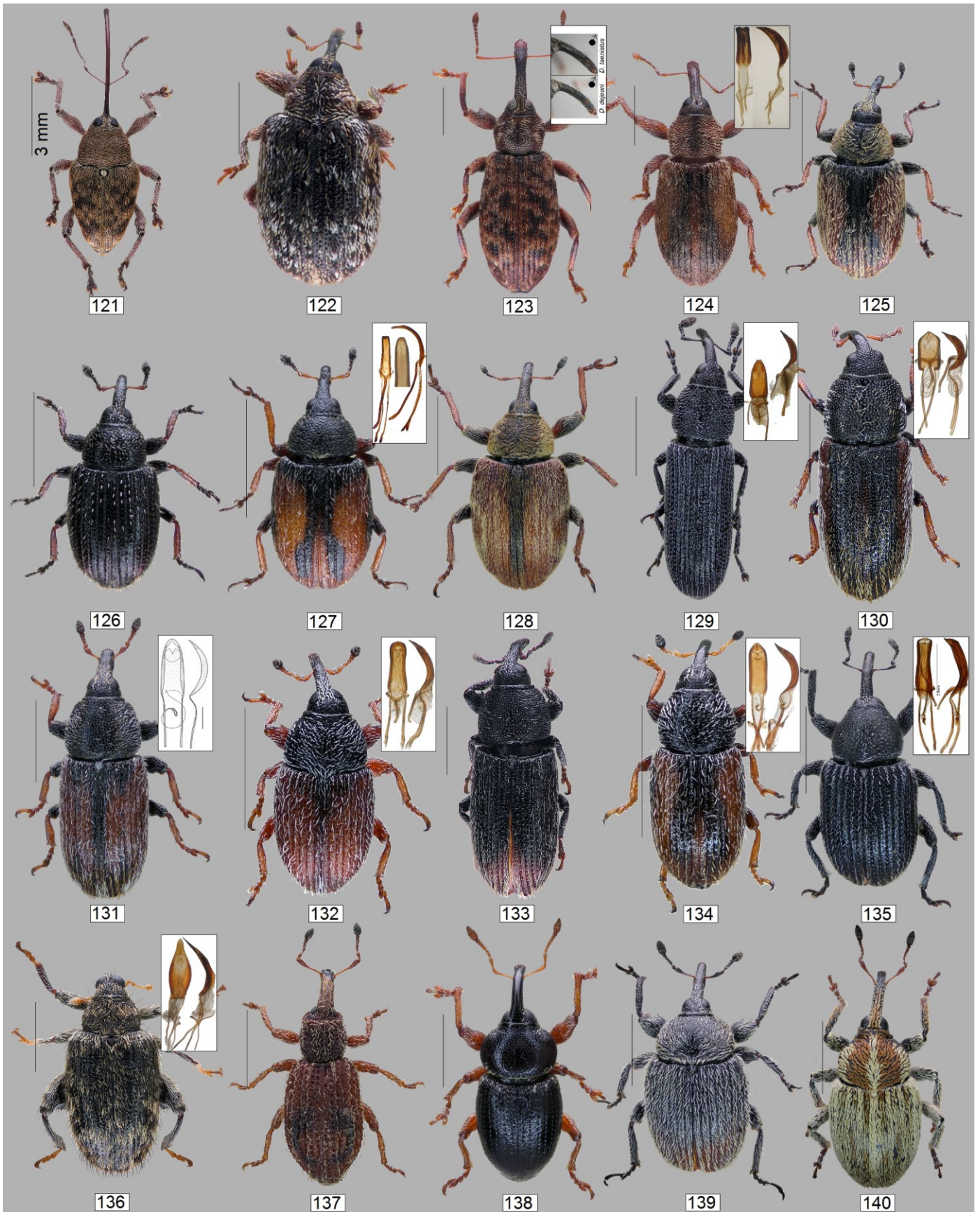
81. *Parethelcus pollinarius*, 82. *Rhinoncus perpendicularis*, 83. *Sirocalodes mixtus*, 84. *Stenocarus ruficornis*, 85. *Trichosirocalus horridus*, 86. *Zacladus exiguus*, 87. *Aulacobaris caerulescens caerulescens*, 88. *A. cuprirostris*, 89. *A. prasina*, 90. *Maurobaris spoliata*, 91. *Malvaevora timida*, 92. *Amaurorhinus cf. sardous*, 93. *Sitophilus zeamais*, 94. *Acalles sardiniensis*, 95. *Acallorneuma abbazzii*, 96. *A. mainardii*, 97. *A. montisalbi*, 98. *A. sardiniense osellai*, 99. *A. sardiniense sardiniense*, 100. *Dichromacalles diocletianus*. (Scale: 2 mm).

© P.E. Stüben/CURCI



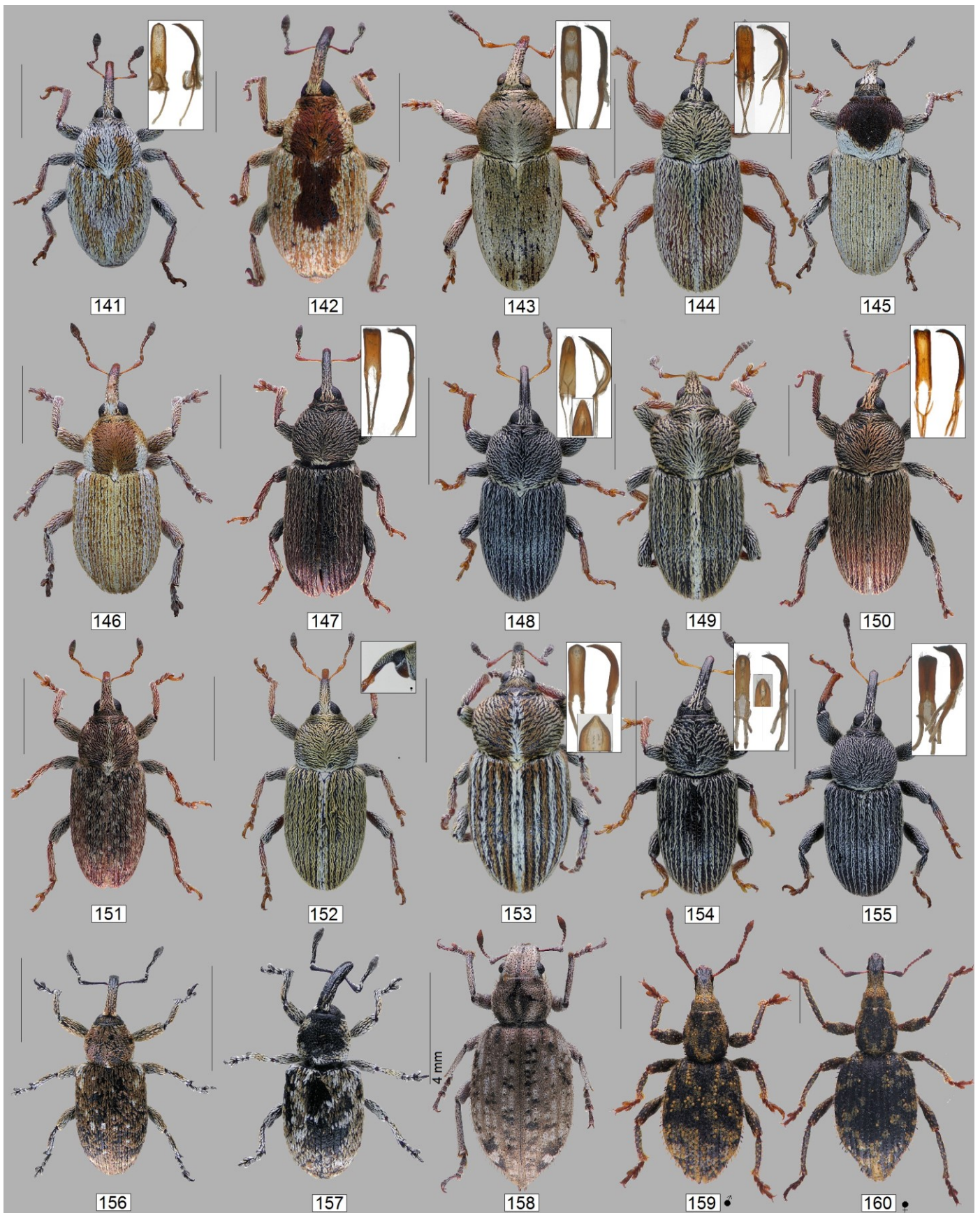
101. *Dichromacalles rolletii*, 102. *Echinodera (Ruteria) bellieri*, 103. *Echinodera nuraghia*, 104. *E. peragalloi*, 105. *E. settefratelliensis*, 106. *Kyklloacalles characivorus*, 107. *Onyxacalles nuraghi*, 108. *Poggionymus crassus*, 109. *Torneuma abbazzii*, 110. *T. curtulum curtulum*, 111. *T. curtulum vastum*, 112. *T. damryi*, 113. *T. deplanatum raymondi*, 114. *T. minutum*, 115. *T. teuladense*, 116. *Acentrus histrio*, 117. *Anthonomus pomorum*, 118. *Anthonomus spilotus*, 119. *Bradybatus fallax*, 120. *Archarius salicivorus*. (Scale: 2 mm).

© P.E. Stüben/CURCI

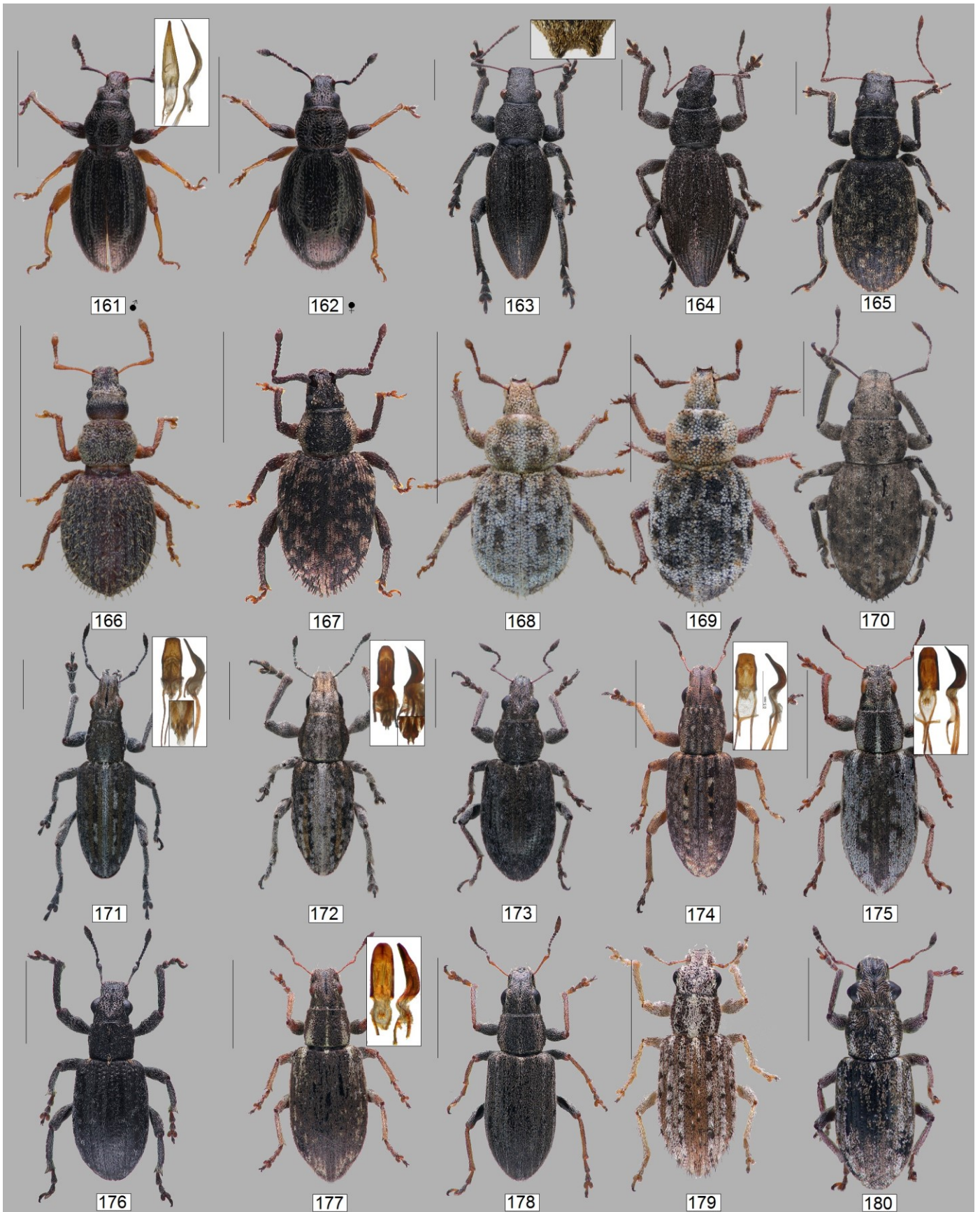


121. *Curculio glandium*, 122. *Cionellus gibbifrons*, 123. *Dorytomus* cf. *taeniatus* / *dejeani*, 124. *D. rufatus*, 125. *Gymnetron niloticum*, 126. *G. rostellum*, 127. *G. tibiellum*, 128. *G. villosulum*, 129. *Mecinus barbarus*, 130. *M. circulator*, 131. *M. comosus*, 132. *M. pascuorum*, 133. *M. pyraster*, 134. *M. variabilis*, 135. *Miarus afer*, 136. *Orchestes irroratus*, 137. *Orthochaetes insignis*, 138. *Pachytychius hordei grandicollis*, 139. *Rhinusa tetra*, 140. *Sibinia femoralis*. (Scale: 1 mm).

© P.E. Stüben/CURCI

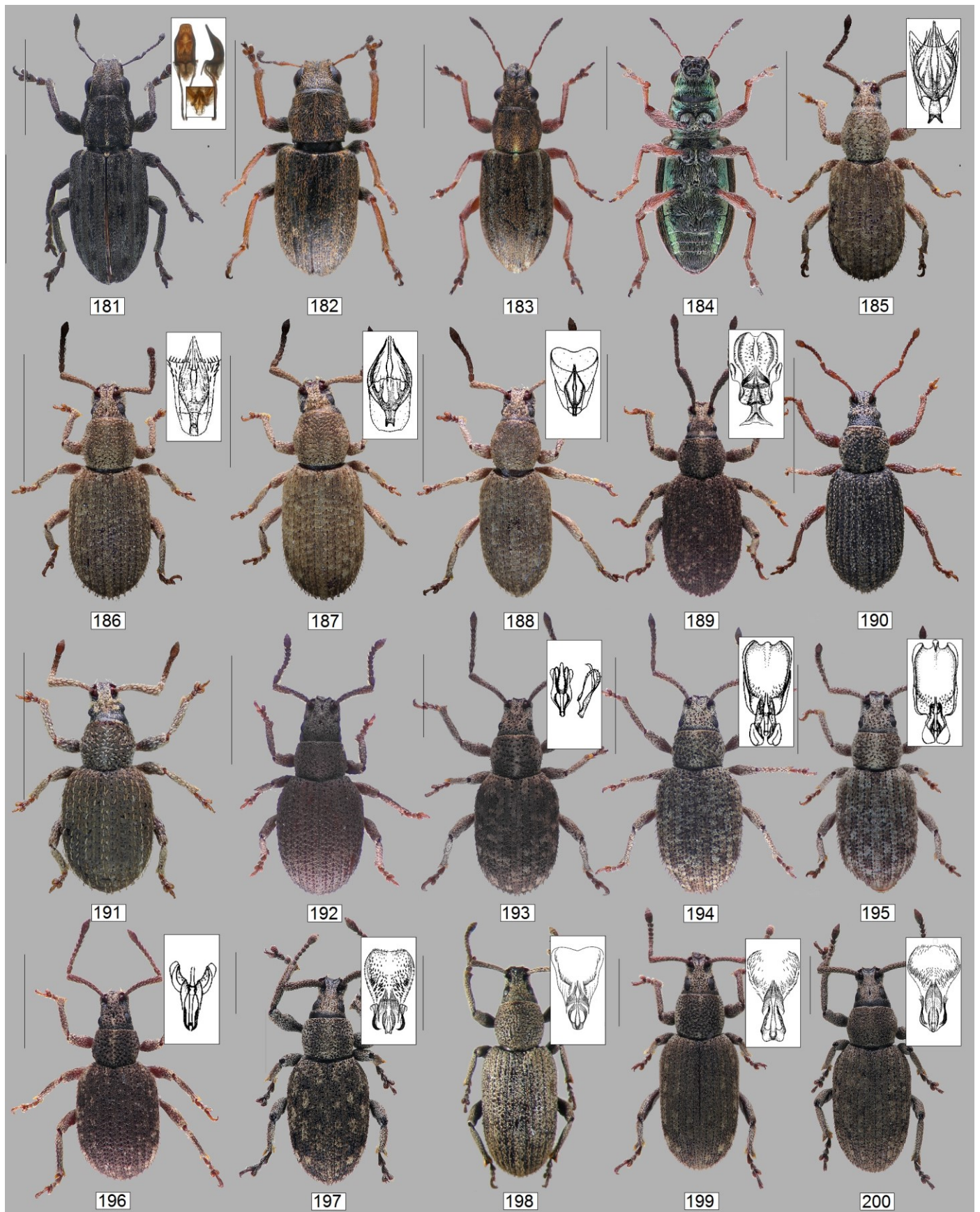


141. *Sibinia femoralis*, 142. *S. serjata*, 143. *Tychius argentatus*, 144. *T. bicolor*, 145. *T. capucinus*, 146. *T. corsosardous*, 147. *T. cuprifer*, 148. *T. decretus*, 149. *T. depressus*, 150. *T. funicularis*, 151. *T. grenieri*, 152. *T. melliloti*, 153. *T. polylineatus*, 154. *T. pusillus*, 155. *T. tibialis*, 156. *Smicronyx albosquamosus*, 157. *S. jungermanniae*, 158. *Cycloderes canescens*, 159. 160. *Dichotrachelus sardous*. (Scale: 1 mm).



161./162. *Barypeithes metallicus*, 163. *Brachyderes illaesus*, 164. *B. incanus*, 165. *B. pubescens*, 166. *Brachysomus hirtus*, 167. *Cathomiorcerus hircus*, 168. *Trachyploeus laticollis*, 169. *T. mariaesilvanae*, 170. *Caulostrophus subsulcatus*, 171. *Charagmus intermedius*, 172. *C. variegatus*, 173. *Coelositona puberulus*, 174. *Sitona cinnamomeus*, 175. *S. discoideus*, 176. *S. gemellatus*, 177. *S. humeralis*, 178. *S. lineatus*, 179. *S. macularius*, 180. *S. ophthalmicus*. (Scale: 2 mm).

© P.E. Stüben/CURCI

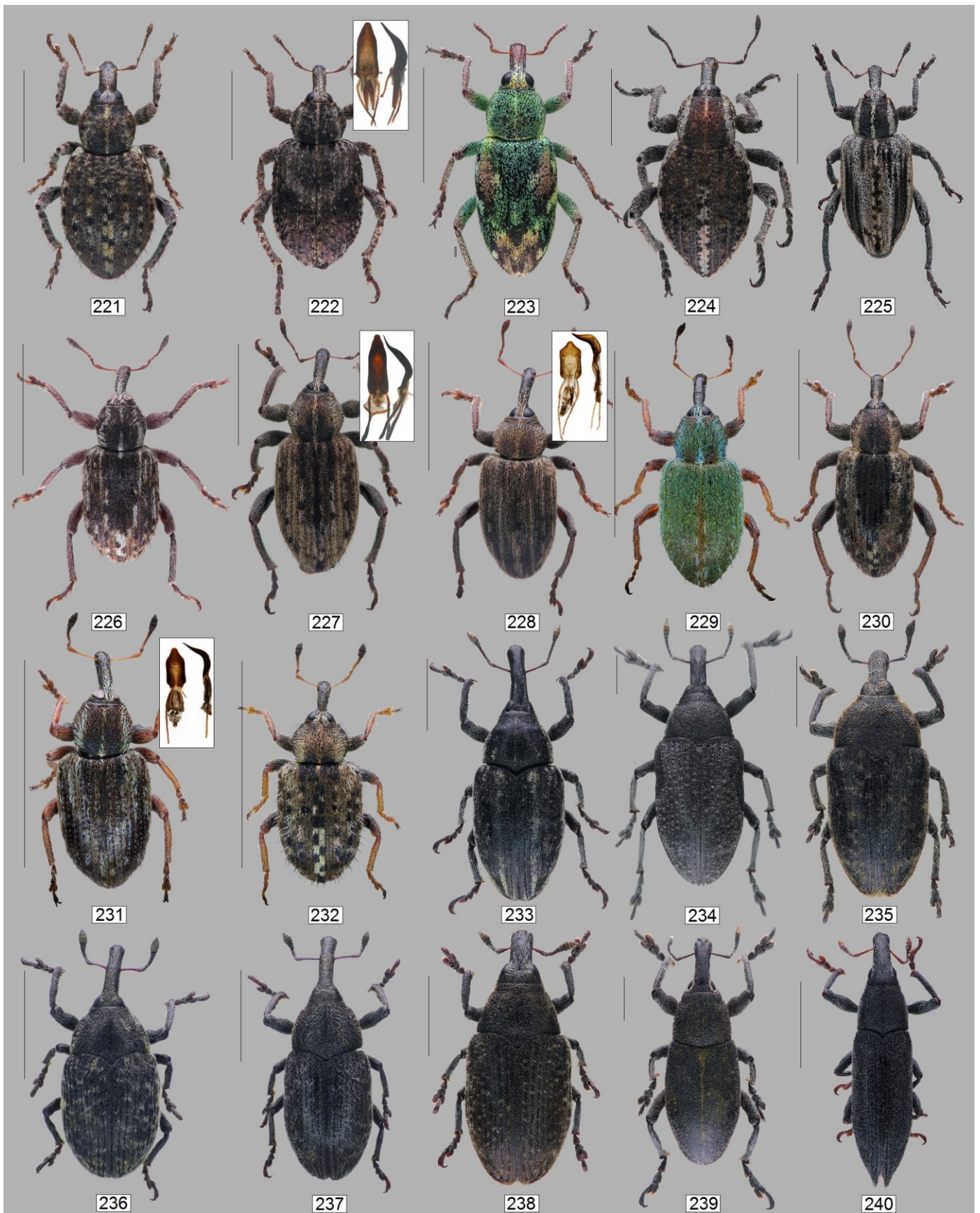


181. *Sitona puncticollis*, 182. *S. sulcifrons argutulus*, 183. 184. *S. verecundus*, 185. *Dolichomeira ichnusae*, 186. *D. olearia*, 187. *D. philippi*, 188. *D. plumbariae*, 189. *Heteromeira proxima*, 190. *Leptomeira meregallii*, 191. *Meirella minima*, 192. *Pseudomeira eleonora*, 193. *P. inopinata*, 194. *P. montisalbi*, 195. *P. sardoa*, 196. *P. transversicollis*, 197. *Simmeiropsis astragali*, 198. *S. germani*, 199. *S. ignorata*, 200. *S. montana*. (Scale: 2 mm).

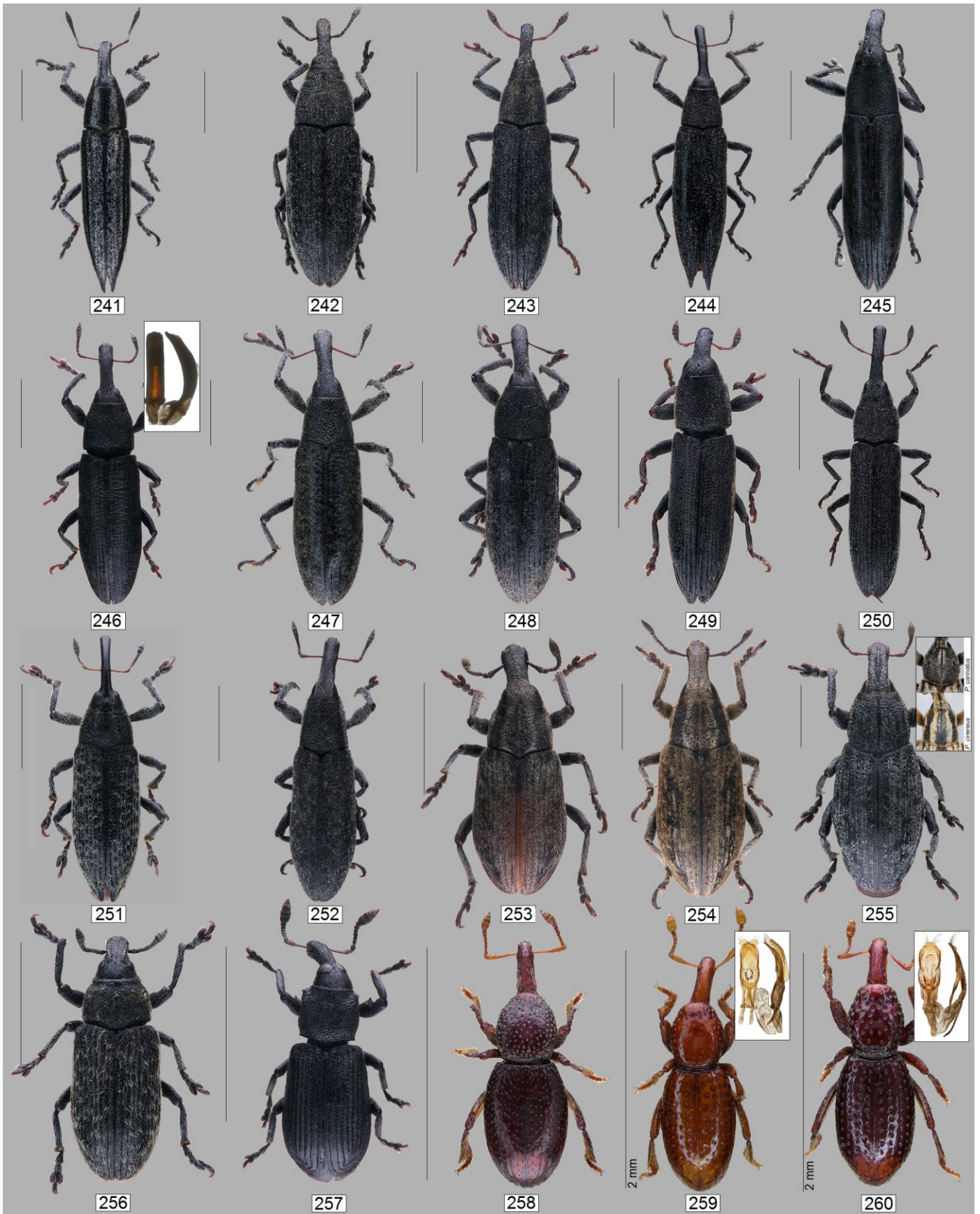


201. *Simmeiopsis osellai*, 202. *S. ottonis*, 203. *tenuisetis*, 204. *S. virginum*, 205. *Otiorhynchus alutaceus*, 206. *O. aurifer*, 207. *O. crataegi*, 208. *O. guttula assimilis*, 209. *O. intrusus*, 210. *parvicollis*, 211. *O. rugosostriatus*, 212. *Pachyrhinus lethierryi*, 213. *Polydrusus cervinus*, 214. *P. leucaspis*, 215. *P. parallelus*, 216. *Phyllobius pellitus*, 217. *Ph. pilipes*, 218. *Rhytideres plicatus*, 219. *Strophomorpha porcellus*, 220. *Strophosoma melanogrammum*. (Scale: 2 mm).

© P.E. Stüben/CURCI



221. *Brachypera crinita*, 222. *B. lunata*, 223. *Coniatus tamarisci*, 224. *Donus philanthus*, 225. *Hypera arator*, 226. *H. constans*, 227. *H. melancholica*, 228. *H. meles*, 229. *H. nigrostris*, 230. *H. postica*, 231. *H. venusta*, 232. *Limobius borealis*, 233. *Larinus carinirostris*, 234. *L. cynarae*, 235. *L. flavescens*, 236. *L. jaceae*, 237. *L. rusticanus*, 238. *L. scolymi*, 239. *Lixomorphus algirus*, 240. *Lixus acicularis*. (Scale: 3 mm).



241. *Lixus anguinus*, 242. *L. cardui*, 243. *L. filiformis*, 244. *L. iridis*, 245. *L. juncii*, 246. *L. linearis*, 247. *L. pulverulentus*, 248. *L. punctiventris*, 249. *L. scabricollis*, 250. *L. scolopax*, 251. *L. umbellatarum*, 252. *L. vilis*, 253. *Mecaspis nana*, 254. *M. striatellus*, 255. *Pseudocleonus carinatus*, 256. *Rhinocyllus conicus*, 257. *Magdalis armigera*, 258. *Derosasius* cf. *damryi sardous*, 259. *Raymondiiellus* cf. *doderoi*, 260. *Raymondiiellus* cf. *vignai*. (Scale: 3 mm).



*Attelabus nitens* on fresh leaves of *Quercus* (Sardinia, Berchiddeddu) - Photos: Stüben.

### List of species

#### ATTELABIDAE Billberg, 1820

##### *Attelabus nitens* (Scopoli, 1763)

**Fig. 1.** I, Sardinia, Berchiddeddu, 40°49'26.66"N, 9°27'14.74"E, 248m, *Quercus*, 15.5.2022, leg. Stüben (40).

Note. On fresh leaves of *Quercus* spp., [*Corylus avellane*, *Castanea sativa*, *Ulmus* spp., *Salix* spp.; Abbazzi & Maggini 2009].

Distribution. Western Palearctic.

#### RHYNCHITIDAE Gistel, 1856

##### *Aletinus maculipennis* (Jacquelin du Val, 1854)

**Fig. 2.** I, Sardinia, 2km S La Caletta, 40°35'38.31"N, 9°45'4.85"E, 2 m, 12.5.2022, leg. Stüben, (32), ♀.

Note. On *Tamarix* spec.

Distribution. Western Mediterranean.

##### *Eomesauletes politus* (Lepelletier & Audinet-Serville, 1825)

**Fig. 3.** I, Sardinia, near Oliena: Monte Maccione, 40°15'19.76"N, 9°25'2.71"E, 878 m, 13.5.2022, sifting under *Quercus*, leg. Stüben (37), ♀. / Illustration supplement. Aedeagus: Tunisia [Skuhrovec et al. 2012].

Note. *Quercus* and *Alnus*.

Distribution. Mediterranean; Ukraine, Poland.

##### *Mesauletobius pubescens* (Kiesenwetter, 1852)

**Fig. 4.** I, Sardinia, near NW Bitti, 40°30'13.72"N, 9°20'34.49"E, 731 m, 15.5.2022, leg. Stüben (39)

Note. On *Cistus* spec.

Distribution. Mediterranean.

##### *Rhodocytus cribripennis* (Desbrochers, 1869)

**Fig. 5.** I, Sardinia, 4 km N Urzulei, 40°7'10.82"N, 9°28'59.80"E, 890 m, *Olea*, 14.5.2022, leg. Stüben (38)

Note. On *Olea* and *Phillyrea* spp. Larvae inside fruits of *Olea* and *Fraxinus* (Colonnelli et al. 2011).

Distribution. Mediterranean.



*Rhodocytus cribripennis* on *Olea* (Sardinia: Dorgali) - Photo: Stüben.



*Exapion fulvum* on *Genista corsica* (Sardinia, Passo Genna Silana, 1017m) - Photos: Stüben.

## BRENTIDAE Billberg, 1820

### Apioninae

#### *Apion haematodes* Kirby, 1808

**Fig. 6.** I., Sardinia, Portoscuso, 39°12'59"N, 8°22'11"E, 19 m, 6.10.2022, leg. Wartmann, ♂.

Note. On *Rumex acetosella* and *Rumex bucephalophorus*.

Distribution. Europe, North Africa, Madeira.

#### *Aspidapion aeneum* (Fabricius, 1775)

**Fig. 7.** I., Sardinia, 7.5 km S Orosei, 40°20'26"N, 9°41'7"E, 4 m, 14.10.2022, *Malva arborea*, leg. Wartmann, ♂.

Note. Malvaceae (*Althaea officinalis* L., *Althaea rosea* L., *Malva* spp.).

Distribution. Western Palaearctic.

#### *Aspidapion radiolus* (Marsham, 1802)

**Fig. 8.** I., Sardinia, near Dorgali, 40°18'11.52"N, 9°37'53.00"E, 223 m, 13.5.2022, leg. Stüben (34), ♂. Illustration supplement. Aedeagus: Hungary.

Note. Malvaceae.

Distribution. Palaearctic.

#### *Aspidapion* cf. *caprai* (Giusto, 1992)

**Fig. 9.** I., Sardinia, 7.5km S. Orosei, Strand, N40°20'26.2" E9°41'6.7", 4 m, 12.5.2022, leg. S. Wartmann, ♂. Illustration supplement. Aedeagus: Sardinia.

Note. On *Lavatera arborea*. It was confirmed immediately before the publication of this article and after the molecular analysis (see mtCO1 in Appendix 1) that,

despite the slightly different habitus (broader elytra) and aedeagus, it is very probably the morphologically extremely variable species *Aspidapion radiolus* (Marsham, 1802).

Distribution. So far known only from Sardinia (see also the distribution of *A. caprai* in the south of Italy; Giusto 1992).

#### *Catapion corsicum* (Desbrochers, 1888)

**Fig. 10.** I., Sardinia, Berchiddedu, 40°49'26.66"N, 9°27'14.74"E, 248 m, 15.5.2022, leg. Stüben (40), det. Schön, ♀.

Note. On *Mellilotus italicus*, *Trigonella*.

Distribution. Northern Mediterranean.

#### *Ceratapion gibbirostre* (Gyllenhal, 1813)

**Fig. 11.** I., Sardinia, 1 km W Osidda, 40°31'11"N, 9°14'6"E, 625 m, 15.5.2022, leg. Wartmann, det. Stüben, ♀. Illustration supplement. Aedeagus: Greece.

Note. On thistle-like plants; mainly on *Carduus*, *Onopordum* and *Cirsium* species.

Distribution. Palaearctic.

#### *Ceratapion scalptum* (Mulsant & Rey, 1858)

**Fig. 12.** I., Sardinia, 13 km NE Macomer: near Lei, Massiv de Marghine: Mt. Lameddari, N40°19'43" E08°54'04", 990 m, sifting under *Quercus ilex*, 29.10.2004, leg. Germann.

Note. On *Cynareae*. (Stüben et al. 2016). Illustration supplement. Aedeagus: Austria.

Distribution. Western Mediterranean, Ukraine, Austria.



*Exapion subparallelum* on *Calicotome spinosa* (Sardinia, Monte Albo) - Photos: Stüben.

***Cistapion cyanescens* (Gyllenhal, 1833)**

**Fig. 13.** I, Sardinia, Berchiddeddu, 40°49'26.66"N, 9°27'14.74"E, 248 m, 15.5.2022, leg. Stüben (40), ♀.

Note. On *Cistus*.

Distribution. Western Mediterranean.

***Diplapion confluens* (Kirby, 1808)**

**Fig. 14.** I, Sardinia, 3 km S La Caletta, 40°35'38.31"N, 9°45'4.85"E, 2 m, 21.5.2022, sandy beach, leg. Stüben (49), ♂. Illustration supplement. V-shaped front wedge.

Note. On *Anthemis* spp., *Matricaria* spp. / GenBank: KC784267.

Distribution. Palaearctic.

***Eutrichapion viciae* (Paykull, 1800)**

**Fig. 15.** I, Sardinia, 7 km E Padru, 40°47'25.24"N, 9°36'0.86"E, 115 m, 17.5.2022, meadow by stream, leg. Stüben (44).

Note. *Vicia* spp. / GenBank: KC784240.

Distribution. Palaearctic.

***Eutrichapion vorax* (Herbst, 1797)**

**Fig. 16.** I, Sardinia, S San Teodoro, 40°45'32.06"N, 9°40'46.29"E, 18m, 17.5.2022, meadow by stream, leg. Stüben (45), ♀.

Note. *Vicia* spp.

Distribution. Western Palaearctic.

***Exapion fulvum* (Desbrochers, 1895)**

**Fig. 17.** I, Sardinia, Monte Albo: Funtana S'Adde, 40°33'22.88"N, 9°38'10.68"E, 735 m, 11.5.2022, leg. Stüben (31)

Note. On *Genista corsica*. DNA (CO1): Barcode see Appendix 1.

Distribution. Corsica, Sardinia.

***Exapion subparallelum* (Desbrochers, 1888)**

**Fig. 18.** I, Sardinia, near Dorgali, 40°18'11.52"N, 9°37'53.00"E, 223 m, 13.5.2022, leg. Stüben (34), ♀.

Note. *Calicotome spinosa*.

Distribution. Western Mediterranean.

***Hemitrichapion pavidum* (Germar, 1817)**

**Fig. 19.** I, Sardinia, 9km SW Lanusei: Ulassai, 39°48'32"N, 9°29'20"E, 730 m, 24.20.2004, leg. Germann. Illustration supplement. Aedeagus: Germany.

Note. On *Securigera*. [*Lathyrus pratensis*, *Coronilla* spp., *Ononis spinosa*, *Abbazzi & Maggini 2008*]

Distribution. Western Palaearctic.

***Holotrichapion gracilicolle* (Gyllenhal, 1839)**

**Fig. 20.** I, Sardinia, S San Teodoro, 40°45'32.06"N, 9°40'46.29"E, 18 m, 17.5.2022, meadow by stream, leg. Stüben (45), ♀. Illustration supplement. Rostrum: Male.

Note. *Lathyrus* spp., *Vicia* spp.

Distribution. Euro-Mediterranean.

***Holotrichapion ononis* (Kirby, 1808) (= *Apion umbrinum* Wollaston, 1864 syn.)**

**Fig. 21.** I, Sardinia, 6 km S Orosei: Spiaggia di Osalla, 40°19'48.08"N, 9°40'33.46"E, 2 m, 9.5.2022, sandy beach, leg. Stüben (24), ♀. Illustration supplement. Rostrum: with protruding bristles.

Note. *Ononis* spp. (e.g. *O. natrix*). For the lectotype designation of *Apion umbrinum* and its synonymisation with *H. ononis* see Stüben (2014).

Distribution. W-Palaeartic.

***Holotrichapion pisi* (Fabricius, 1801)**

**Fig. 22.** I, Sardinia, below Villasalto, 39°29'39.54"N, 9°24'9.21"E, 448 m, 5.5.2022, leg. Stüben (5B), ♀.

Note. *Medicago sativa* (see also Sprick, in: Stüben et al. 2018) / GenBank: KC784238; KC784263.

Distribution. Western Palaearctic.

***Ischnopterapion modestum* (Germar, 1817)**

**Fig. 23.** I, Sardinia, near Orschiri: Lago del Coghinias, 40°45'25.60"N, 9°4'40.68"E, 160 m, 16.5.2022, leg. Stüben (43), ♀.

Note. For the difficult but also questionable distinction between *I. modestum* and *I. plumbeomicans plumbeomicans* see, among others, Stüben et al. (2015), Stüben (2022).

Distribution. Euro-Mediterranean.

***Ischnopterapion virens* (Herbst, 1797)**

**Fig. 24.** I, Sardinia, 3 km S La Caletta, 40°35'38.31"N, 9°45'4.85"E, 2 m, 21.5.2022, beach vegetation, leg. Stüben (48), ♂.

Note. *Trifolium* spp. It seems certain that *I. virens* is a complex of species (for this see Stüben 2022: 65) / GenBank: KC784258.

Distribution. Western Palaearctic.

***Kalcapion semivittatum* (Gyllenhal, 1833)**

**Fig. 25.** I, Sardinia, 4 km E Galtelli, Fiume Cedrino, 40°23'58.71"N, 9°39'12.42"E, 10 m, 10.5.2022, wetland near river, leg. Stüben (26), ♀.

Note. *Mercurialis* spp.

Distribution. Western Palaearctic.

***Lepidapion sardoum* (Schatzmayr, 1933) stat. nov.**

**Fig. 26/27.** I, Sardinia, 6.5 km S Fonni, 40°4'14"N, 9°16'21"E, 1254 m, 13.10.2022, leg. Wartmann / Casalini, ♂, ♀.

Note. On *Genista pichisermolliana* Vals. (in litt. Casalini). *Lepidapion argentatum* (Gerstäcker, 1906) always have a dark (black) rostrum, this is always reddish brown in the females from Sardinia.

Endemic: Sardinia.

***Malvapion malvae* (Fabricius, 1775)**

**Fig. 28.** I, Sardinia, 4 km E Galtelli, Fiume Cedrino, 40°23'58.71"N, 9°39'12.42"E, 10 m, 10.5.2022, wetland near river, leg. Stüben (26)

Note. *Malva* spec. and *Lavatera cretica*.

Distribution. Palaearctic.

***Oryxolaemus croceifemoratus* (Gyllenhal, 1839)**

**Fig. 29.** I, Sardinia, below Villasalto, 39°29'39.54"N, 9°24'9.21"E, 448 m, 5.5.2022, leg. Stüben (5B)

Note. *Anagyris foetida*.

Distribution. Mediterranean.



*Oryxolaemus scabiosus* on Gorse (Sardinia: Spiaggia di Osalla) - Photos: Stüben.

***Oryxolaemus scabiosus* (Weise, 1889)**

**Fig. 30.** I, Sardinia, Environs of Cala Conone, 40°16'39.45"N, 9°37'22.06"E, 9-90 m, 9.5.2022, *Quercus* forest / coast, leg. Stüben (22)

Note. Species of *Calicotome* spp. (Sprick, in: Stüben et al. 2018); Abbazzi & Maggini (2009) name further Fabaceae: *Genista* spp., *Trifolium* spp., *Vicia* spp. / GenBank: KC784268.

Distribution. Euro-Mediterranean.

***Perapion hydrolapathi* (Marshall, 1802)**

**Fig. 31.** I, Sardinia, 4 km E Galtelli, Fiume Cedrino, 40°23'58.71"N, 9°39'12.42"E, 10 m, 10.5.2022, wetland near river, leg. & det. Wartmann, ♂. Illustration supplement. Aedeagus: Germany.

Note. *Rumex* spec. (e.g. *Rumex hydrolapathum*).

Distribution. Europe, Northern Africa, Syria.

***Perapion violaceum* (Kirby, 1808)**

**Fig. 32.** I, Sardinia, Barchiddeddu, 40°49'26.66"N, 9°27'14.74"E, 248 m, 15.5.2022, leg. Stüben (40), ♂. Illustration supplement. Aedeagus: Croatia.

Note. *Rumex* spec.

Distribution. Palaearctic.

***Phrissotrichum tubiferum* (Gyllenhal, 1833)**

**Fig. 33.** I, Sardinia, near Oliena: Monte Maccione, 40°15'19.76"N, 9°25'2.71"E, 878 m, 13.5.2022, leg. Stüben (37), ♀.

Note. Especially on *Cistus incanus*.

Distribution. Mediterranean.

***Protapion angusticolle* (Gyllenhal, 1833)**

**Fig. 34.** I, Sardinia, 7 km W Dorgali, 40°17'59"N, 9°36'33"E, 376 m, 9.5.2022, leg. & det. Wartmann, ♀. Illustration supplement. Aedeagus: Spain.

Note. Host plants are *Trifolium stellatum* and *T. pamphylicum* (Cyprus).

Distribution. Southern and Eastern Europe, Asia, Northwest Africa.

***Protapion apricans* (Herbst, 1797)**

**Fig. 35.** I, Sardinia, 7 km W Dorgali, 40°17'59"N, 9°36'33"E, 376 m, 9.5.2022, leg. & det. Wartmann. Illustration supplement. Aedeagus: Germany.

Note. On *Trifolium pratense*.

Distribution. Palaearctic.

***Protapion dentipes* (Gerstäcker, 1854)**

**Fig. 36.** I, Sardinia, S Ulàssai: Mt. P. Corongiu, limestone, rock edge, sifting, N39°46'05", E09°29'49", 763 m, 12.05.2014, leg. Stüben & Schütte (22), ♂.

Note. On *Trifolium* (Russell 2004).

Distribution. Mediterranean.

***Protapion diffforme* (Germar, 1818)**

**Fig. 37/38.** I, Sardinia, 5 km SE Calangianus, 40°53'35.38"N, 9°13'56.81"E, 608 m, 16.5.2022, leg. Stüben (41), ♀.

Note. On *Trifolium* spec.

Distribution. Euro-Mediterranean.

***Protapion dissimile* (Germar, 1817)**

**Fig. 39/40.** I, Sardinia, 7 km E Padru, 40°47'25.24"N, 9°36'0.86"E, 115 m, 17.5.2022, meadow by stream, leg. Stüben (44), ♀.

Note. The species lives monophagously on *Trifolium arvense*.

Distribution. Western Palaearctic.

***Protapion fulvipes* (Geoffroy, 1785)**

**Fig. 41.** I, Sardinia, 4 km E Galtelli, Fiume Cedrino, 40°23'58.71"N, 9°39'12.42"E, 10 m, 10.5.2022, wetland near river, leg. & det. Wartmann, ♀. Illustration supplement. Aedeagus: Germany.

Note. On *Trifolium repens* and *T. hybridum*.

Distribution. Palaearctic.

***Protapion interjectum* (Desbrochers, 1895)**

**Fig. 42.** I, Sardinia, 7 km E Padru, 40°47'25.24"N, 9°36'0.86"E, 115 m, 17.5.2022, meadow by stream, *Geranium robertianum*, leg. Stüben (44), det. Schön; ♂. Illustration supplement. Aedeagus: Poland.

Note. On *Trifolium* spp. (especially on *Trifolium montanum*).

Distribution. Euro-Mediterranean.

***Protapion laevicolle* (Kirby, 1811)**

**Fig. 43.** I, Sardinia, 33 km NE Cagliari: Sarrabus, Rio di Cannas, N39°20'52" E09°27'18", 110 m, 25.10.2004, leg. Stüben (26), ♀.

Note. It is a gall former on *Trifolium repens*. / GenBank: KC784254; KC784257

Distribution. Euro-Mediterranean.

***Protapion nigrirtarse* (Kirby, 1808)**

**Fig. 44.** I, Sardinia, 1 km N Lotzorai, 39°58'24.24"N, 9°39'47.56"E, 8m, 4.5.2022, leg. Stüben (3), ♂. Illustration supplement. Rostrum: Female.

Note. On *Trifolium dubium* and *Trifolium campestre*.

Distribution. Western Palaearctic.

***Protapion trifolii* (Linné, 1768)**

**Fig. 45.** I, Sardinia, 3 km S La Caletta, 40°35'38.31"N, 9°45'4.85"E, 2 m, 21.5.2022, Beach vegetation, leg. Stüben (48). Illustration supplement. Colouration of the coxae and trochanters.

Note. On different plant species of the genus *Trifolium*.

Distribution. Western Palaearctic.

***Pseudapion rufirostre* (Fabricius, 1775)**

**Fig. 46.** I, Sardinia, 5 km E Villasalto: Domueu (near brook), 39°29'32.94"N, 9°26'52.46"E, 53 m, 5.5.2022, leg. Stüben (10), ♀.

Note. *Malva* spec. and *Lavatera cretica*.

Distribution. Western Palaearctic.

***Squamapion consors consors* (Desbrochers des Loges, 1875)**

**Fig. 47.** I, Sardinia, 28 km E Cagliari: Massiv Sette Fratelli, 39°16'11"N, 9°25'32"E, 700 m, 25.10.2004, leg. Germann.

Note. On *Mentha* spp. (Hoffmann 1958). The subspecies *S. consors solariorum* (Wagner, 1908) occurs in North Africa.

Distribution. Corsica, Sardinia, Sicily.

***Taeniapion rufescens* (Gyllenhal, 1833)**

**Fig. 48.** I, Sardinia, 9 km SW Lanusei: Ulàssai, 39°48'35"N, 9°29'48"E, 700 m, 24.20.2004, leg. Germann, ♀. Illustration supplement. Aedeagus: Sicily.

Note. On *Parietaria* spp.

Distribution. Mediterranean, Southern Europe.

***Taeniapion rufulum* (Wencker, 1864)**

**Fig. 49.** I, Sardinia, Monte Albo, 40°33'37"N, 9°38'00"E, 780 m, 5.4.2007, leg. Germann, ♀. Illustration supplement. Aedeagus: Germany.

Note. On *Urtica urens* and *U. pilulifera*. Barcode: see mtCO1 in Appendix 1.

Distribution. Europe, Mediterranean.



*Phrissotrichum tubiferum* on *Cistus incanus* (Sardinia, Escalaplano) - Photos: Stüben.

***Taeniapion tyrrhenicum* Alonso-Zarazaga, 2011** [replacement name], ♀.  
= *Apion distinctirostre* Desbrochers des Loges, 1888 (Homonym)

**Fig. 50.** I, Sardinia, near Cala Gonone, 40° 17'12"N, 9°37'57"E, 64 m, *Urtica atrovirens*, 10.5.2022, leg. Wartmann.

Note. Monophagous on *Urtica atrovirens*; see also Fig. 60.  
Distribution. Corsica and Sardinia.

#### Nanophyinae

***Allomalía quadrivirgata* (Costa, 1863)**

**Fig. 51.** I, Sardinia, 5 km NE Posada: Spiaggia di Matte e Peru, 40°39'53.05"N, 9°44'56.13"E, 2 m, 20.5.2022, leg. Stüben (48), ♀. Illustration supplement. Aedeagus: Sicily.

Note. *Tamarix* spec. / GenBank: MK890800; KC784277.  
Distribution. Mediterranean; Caucasus, Turkestan.

***Corimalia postica* (Gyllenhal, 1838)**

**Fig. 52.** I, Sardinia, Villasalto, 39°29'37.83"N, 9°23'42.24"E, 498 m, *Tamarix parviflora*, 5.5.2022, leg. Stüben (5A), ♂. Illustration supplement. Aedeagus: Sardinia.

Note. *Tamarix* spec.  
Distribution. Mediterranean.

***Corimalia pallida* (Olivier, 1807)**

= *Corimalia centromaculata* (Costa, 1863) syn.

**Fig. 53.** I, Sardinia, Villasalto, 39°29'37.83"N, 9°23'42.24"E, 498 m, *Tamarix parviflora*, 5.5.2022, leg. Stüben (5A), ♂.

Note. *Tamarix* spec. / GenBank: KC784252 / KC784266.  
Distribution. Mediterranean.

***Corimalia tamarisci* (Gyllenhal, 1838)**

**Fig. 54.** I, Sardinia, La Paluda sa Masa, 39°17'4"N, 8°26'37"E, 18 m, *Tamarix*, 10.10.2022, leg. Wartmann, ♂. Illustration supplement. Aedeagus: Sicily.

Note. *Tamarix* spec.  
Distribution. Western Mediterranean.

***Hypophyes pallidulus* (Gravenhorst, 1807)**

**Fig. 55.** I, Sardinia, Ballao, near river, 39°33'12.71"N, 9°21'20.47"E, 83 m, *Borago officinalis*, 5.5.2022, leg. Stüben (9), ♀. Illustration supplement. Aedeagus: Azores (Faial).

Note. *Tamarix* spec. / GenBank: MK890801; KC784278.  
Distribution. Western Mediterranean.

***Dieckmanniellus nitidulus* (Gyllenhal, 1838)**

**Fig. 56.** I, Sardinia, Costa Smeralda (Golfo Aranci: Spiaggia Bianca), 40°59'27.47"N, 9°35'34.86"E, 3 m, 18.5.2022, *Lythrum hyssopifolia*, leg. Stüben (47).

Note. *Lythrum* spp.  
Distribution. Western Palaearctic.

***Nanodiscus transversus* (Aubé, 1850)**

**Fig. 57.** I, Sardinia, 4 km N Urzulei, 40° 7'10.82"N, 9°28'59.80"E, 890 m, 14.5.2022, leg. Stüben (38), ♀.

Note. *Juniperus oxycedrus*, *Cupressus* spp., *Juniperus* spp.  
Distribution. Mediterranean; Canary Islands.

***Nanomimus hemisphaericus* (Olivier, 1807)**

**Fig. 58.** I, Sardinia, Costa Smeralda (Golfo Aranci: Spiaggia Bianca), 40°59'27.47"N, 9°35'34.86"E, 3 m, 18.5.2022, *Lythrum hyssopifolia*, leg. Stüben (47), ♂. Illustration supplement. Aedeagus (in: Alonso-Zarazaga 1989).

Note. *Lythrum* spec.  
Distribution. Western Palaearctic.

***Nanophyes rubricus* Rosenhauer, 1856**

**Fig. 59.** I, Sardinia, 5 km SE Calangianus, 40°53'35.38"N, 9°13'56.81"E, 608 m, 16.5.2022, leg. Stüben (41), det. Schön, ♂.

Note. On *Lythrum* spp.  
Distribution. Western Palaearctic.

***Taeniapion tyrrhenicum* Alonso-Zarazaga, 2011** ♂

**Fig. 60.** France: Corsica, Photo by J.-Ch. Compte, 2016 ([www.apions.blogspot.com](http://www.apions.blogspot.com)); see also Fig. 50.

#### CURCULIONIDAE Latreille, 1802

##### Brachycerinae

***Brachycerus barbarus* (Linnaeus, 1758)**

**Fig. 61.** I, Sardinia, S.M. Pula, Cagliari, 17.5.1987, leg. Hadulla. Illustration supplement. Aedeagus: Algeria.

Note. On *Urginea maritima*, *Scilla* spp.  
Distribution. Western Palaearctic.

***Brachycerus albidentatus* Gyllenhal, 1840**

**Fig. 62.** I, Sardinia, 16km NE Iglesias, Monte Mannu, N39°22'52" E08°40'51", 545 m, garrigue, 29.03.2005, leg. Stüben (25). Illustration supplement. Aedeagus: same locality.

Note. On *Allium* spp., *Pancretium maritimum*.

Distribution. Western Palaearctic.

***Brachycerus muricatus* Olivier, 1790**

**Fig. 63.** I, Sardinia, 16km NE Iglesias, Monte Mannu, N39°22'52" E08°40'51", 545 m, garrigue, 29.03.2005, leg. Stüben (25), det. Germann. Illustration supplement. Aedeagus: Central Italy.

Note. On *Allium* spp., *Tulipa* spec.

Distribution. Mediterranean.

**Ceutorhynchinae*****Calosirus terminatus* (Herbst, 1795)**

**Fig. 64.** I, Sardinia, 5 km SE Calangianus, 40°53'35.38"N, 9°13'56.81"E, 608 m, 16.5.2022, leg. Stüben (41)

Note. On Apiaceae.

Distribution. Western Palaearctic.

***Ceutorhynchus chalybaeus* Germar, 1824**

**Fig. 65.** I, Sardinia, E Sarùle, N.S. Di Gonari (chapel), *Quercus ilex*, rock edge, sifting (soil), N40°13'41"E, E09°12'00", 1005 m, 17.05.2014, leg. Stüben & Schütte (41), det. Krátky. Illustration supplement. Aedeagus: Poland.

Note. On Brassicaceae / GenBank: KC784234.

Distribution. Western Palaearctic.

***Ceutorhynchus contractus* (Marsham, 1802)**

**Fig. 66.** I, Sardinia, S Dorgali: Genna Silana, N40°9'30", E9°30'16", 1017m, 27.9.2010, leg. Stüben (6), ♂.

Note. On Brassicaceae and Resedaceae / GenBank: KC784244; KC784248.

Distribution. Western Palaearctic.

***Ceutorhynchus duvali* C. Brisout, 1869**

**Fig. 67.** I, Sardinia, 5 km NE Lula: Monte Albo, N40°29'40" E09°32'07", 702 m, 19.10.2004, leg. Stüben (7), ♀. Illustration supplement. Aedeagus: Corsica.

Note. On *Bunias erucago*, occasionally found on *Cakile maritima* (Colonnelli 2004).

Distribution. Mediterranean.

***Ceutorhynchus erysimi* (Fabricius, 1787)**

**Fig. 68.** I, Sardinia, NW Bolòtana, near Badde Salighes, forest, sifting, N40°21'02" E6°53'37", 1038 m, 14.5.2014, leg. Stüben & Schütte (30), det. Krátky. Illustration supplement. Aedeagus: Greece.

Note. On Brassicaceae.

Distribution. Palaearctic.

***Ceutorhynchus leprieuri* C. Brisout de Barneville 1881**

**Fig. 69.** I, Sardinia, Ovilò, 40°48'44.38"N, 9°35'12.23"E, 93 m, 4.5.2022, ruderal habitat at the roadside, on *Diplotaxis*, leg. Stüben (1), ♂. Illustration supplement. Aedeagus: Germany.

Note. On Brassicaceae / GenBank: KC784260; KC784239.

Distribution. Euro-Mediterranean.

***Ceutorhynchus pallidactylus* (Marsham, 1802)**

**Fig. 70.** I, Sardinia, below Villasalto, 39°29'39.54"N, 9°24'9.21"E, 448 m, 5.5.2022, leg. Stüben (5B)

Note. On Brassicaceae.

Distribution. Palaearctic; introduced: Africa, Nearctic Region, Oriental Region.

***Ceutorhynchus picitarsis* Gyllenhal, 1837**

**Fig. 71.** I, Sardinia, Monte Albo: 1 km S Lula, 40°27'43.27"N, 9°29'21.70"E, 557 m, 11.5.2022, leg. Stüben (28). Illustration supplement. Aedeagus: Germany.

Note. On Brassicaceae.

Distribution. Palaearctic.

***Ceutorhynchus typhae* (Herbst, 1795)**

= *C. floralis* (Paykull, 1792)

**Fig. 72.** I, Sardinia, 4 km E Galtelli, Fiume Cedrino, 40°23'58.71"N, 9°39'12.42"E, 10 m, 10.5.2022, wetland near river, leg. & det. Wartmann. Illustration supplement. Aedeagus: Slovenia.

Note. On Brassicaceae (mainly on small white flowering species).

Distribution. Palaearctic (also Nearctic Region).

***Ceutorhynchus viridipennis* C. Brisout, 1869**

**Fig. 73.** I, Sardinia, N Gáiro, sifting, N39°52'06", E09°30'13", 906 m, 11.05.2014, leg. Stüben & Schütte (20), det. Krátky. Illustration supplement. Aedeagus: Italy.

Note. On *Bunias erucago*; see Sprick, in: Stüben et al. (2013).

Distribution. Mediterranean.

***Coeliodes transversealbofasciatus* (Goeze, 1777)**

**Fig. 74.** I, Sardinia, 21 km SO Aritzo, Barbagia Seulo: Monte Arqueri, N39°49'02" E09°21'59", 950 m, *Quercus ilex*, 22.10.2004, leg. Stüben (18).

Note. On *Quercus* / GenBank: KC784250.

Distribution. Western Palaearctic.

***Drupenatus nasturtii* (Germar, 1824)**

**Fig. 75.** I, Sardinia, Onifai, Lago Cedrino, 10.5.2022, leg. Casalini.

Note. On *Nasturtium* spp.

Distribution. Europe, Turkey.

***Hadropontus trimaculatus* (Fabricius, 1775)**

**Fig. 76.** I, Sardinia, W Siniscola, Monte Albo, N40°33'37" E9°38'1", 778 m, 26.9.2010, leg. Stüben (1), ♂.

Note. On *Carduus* spp., *Cirsium* spp., *Onopordum* spp. / GenBank: KC784237.

Distribution. Western Palaearctic.

***Microplontus melanostigma* (Marsham, 1802)**

Formerly *Microplontus rugulosus* (Herbst, 1795)

**Fig. 77.** I, Sardinia, S Costa Rein: Cala Sinzias, 39°11'31.47"N, 9°33'44.13"E, 6 m, 7.5.2022, beach vegetation and meadow, leg. Stüben (18), ♂, det. Krátky. Illustration supplement. Aedeagus: Greece.

Note. On *Matricaria*.

Distribution. Western Palaearctic.

***Microplontus nigrovittatus* (Schultze, 1901)**

**Fig. 78.** I, Sardinia, S Costa Rein: Cala Sinzias, 39°11'31.47"N, 9°33'44.13"E, 6 m, 7.5.2022, beach vegetation and meadow, leg. Stüben (18), ♀, det. Krátky. Illustration supplement. Aedeagus: Italy.

Note. On *Glebionis coronaria*.

Distribution. Western Mediterranean.

***Mogulones cf. geographicus* (Goeze, 1777)**

very likely *Mogulones griseus* (Pic, 1940)!

**Fig. 79.** I, Sardinia, S Costa Rein: Cala Sinzias, 39°11'31.47"N, 9°33'44.13"E, 6 m, 7.5.2022, beach vegetation and meadow, leg. Stüben (18), ♀.

Note. On *Echium* spp. The specimens from Sicily and Sardinia fall into the same clade (mtCO1 Neighbour Joining tree) as the specimens I sequenced from Morocco and the Madeira archipelago, which were provisionally identified by me as *Mogulones griseus* (Pic, 1940), a species described from Egypt (see GenBank: KC784259). The clade of *Mogulones geographicus* specimens from Portugal (mainland), Germany, the Czech Rep., Slovakia and Luxembourg is clearly separated from this taxon by more than 9%! A final morphological-taxonomic clarification of these quite unambiguous molecular studies (Stüben et al. 2015 (Suppl.), Stüben 2022) is still pending.

Distribution. Mediterranean; Macaronesia: Azores, Madeira, Porto Santo.

***Mogulones peregrinus* (Gyllenhal, 1837)**

**Fig. 80.** I, Sardinia, Ballao, near river, 39°33'12.71"N, 9°21'20.47"E, 83m, 5.5.2022, leg. Stüben (9). Illustration supplement. Aedeagus: Corsica.

Note. On *Borago officinalis*, *Cerithe major*.

Distribution. Mediterranean.

***Parethelcus pollinarius* (Forster, 1771)**

**Fig. 81.** I, Sardinia, 16 km NE Lula: Monte Albo, N40°33'30" E09°38'05", 750 m, 19.10.2004, leg. Stüben (9). Illustration supplement. Aedeagus: Germany.

Note. On *Urtica*.

Distribution. Western Palaearctic; Kazakhstan.

***Rhinoncus perpendicularis* (Reich, 1797)**

**Fig. 82.** I, Sardinia, 4 km E Galtelli, Fiume Cedrino, 40°23'58.71"N, 9°39'12.42"E, 10m, 10.5.2022, wetland near river, leg. & det. Wartmann, Stüben & Germann, ♂.

Note. On *Polygonum* and *Persicaria*. The specimens from Sardinia (with reddish brown legs) are not clearly assigned to *Rhinoncus pericarpus* (according to a more recent, very misleading naming *R. leucostigma* (Marsham, 1802)) or *R. perpendicularis* in terms of habitus (see Stüben et al. 2012). However, the aedeagus corresponds to that of *R. perpendicularis*.

Distribution. Palaearctic.

***Sirocalodes mixtus* (Mulsant & Rey, 1858)**

**Fig. 83.** I, Sardinia, 5 km NE Lula, Monte Albo, 40°29'40"N, 9°32'7"E, 703m, 19.10.2004, leg. Germann, ♂. Illustration supplement. Aedeagus: Cyprus.

Note. On *Fumaria* and *Ceratocarpus*.

Distribution. Western and Southern Europe, Mediterranean, Caucasus.

***Stenocarus ruficornis* (Stephens, 1831)**

**Fig. 84.** I, Sardinia, 16 km NE Lula: Monte Albo, N40°33'30" E09°38'05", 750 m, Papaver, 19.10.2004, leg. Stüben (9). Illustration supplement. Aedeagus: France.

Note. On Papaveraceae.

Distribution. Western Palaearctic.

***Trichosirocalus horridus* (Panzer, 1801)**

**Fig. 85.** I, Sardinia, 4 km E Galtelli, Fiume Cedrino, 40°23'58.71"N, 9°39'12.42"E, 10 m, 10.5.2022, wetland near river, leg. Stüben (26), ♀.

Note. On *Carduus* and other *Carduaceae*.

Distribution. Western Palaearctic.

***Zacladus exiguus* (Olivier, 1807)**

**Fig. 86.** I, Sardinia, 7 km E Padru, 40°47'25.24"N, 9°36'0.86"E, 115 m, 17.5.2022, meadow by stream, *Geranium robertianum*, leg. Stüben (44)

Note. On *Geranium* spp.

Distribution. Western Palaearctic.

**Baridinae*****Aulacobaris caerulea* (Scopoli, 1763)**

**Fig. 87.** I, Sardinia, 4 km E Galtelli, Fiume Cedrino, 40°23'58.71"N, 9°39'12.42"E, 10 m, 10.5.2022, wetland near river, *Sinapis arvensis*, leg. Stüben (26). Illustration supplement. Aedeagus: Germany.

Note. On Brassicaceae, *Reseda lutea*.

Distribution. Western Palaearctic.

***Aulacobaris cupirostris* (Fabricius, 1787)**

**Fig. 88.** I, Sardinia, 4 km E Galtelli, Fiume Cedrino, 40°23'58.71"N, 9°39'12.42"E, 10 m, 10.5.2022, leg. R. Casalini.

Note. On *Brassica*, *Diplotaxis*, *Sinapsis*; see Sprick, in: CURCULIO Team, 2007; some specimens become green-bluish.

Distribution. Central and Southern Europe, Northwest Africa.



*Mogulones peregrinus* on *Borago officinalis* (Sardinia, Ballao) - Photos: Stüben.

***Aulocobaris prasina* (Boheman, 1836)**

**Fig. 89.** I, Sardinia, 4 km E Galtelli, Fiume Cedrino, 40°23'58.71"N, 9°39'12.42"E, 10 m, 10.5.2022, wetland near river, *Sinapis arvensis*, leg. Stüben (26), ♀.

Note. On *Erysimum*, *Sinapsis*, *Matthiola*, *Raphanus*; see Sprick, in: CURCULIO Team, 2007.

Distribution. Western Mediterranean.

***Maurobaris spoliata* (Boheman, 1836)**

**Fig. 90.** I, Sardinia, Ostküste, 5 km N Dorgali, near G.ta di Ispinigoli, N40°19'12" E09°36'00", 241 m, 25.3.2005, leg. Stüben (17)

Note. Chenopodiaceae. Sprick (in: CURCULIO Team, 2007) mentions certain host plants for Southern Europe: *Beta vulgaris maritima* and *Camphorosma monspeliaca*; in North Africa reported from *Dianthus* spp. (Caryophyllaceae).

Distribution. Western Mediterranean.

**Malvaevora timida (Rossi, 1792)**

**Fig. 91.** I, Sardinia, 4 km E Galtelli, Fiume Cedrino, 40°23'58.71"N, 9°39'12.42"E, 10 m, 10.5.2022, wetland near river, leg. Stüben (26)  
Note. On Malvaceae.

Distribution. Mediterranean, Southeast Europe, Asia.

**Cossoninae****Amaurorhinus cf. sardous Folwaczny, 1972**

**Fig. 92.** I, West-Sardinia, 15 km NW Iglesias, Buggerru: steep coast, N39°25'10" E08°24'42", 10 m, Limestone rock: garrigue, *Pistacia*, *Euphorbia*, sifting, 01.04.2005, leg. Stüben (34), ♂. Illustration supplement. Aedeagus: same locality. Distribution. Corsica, Sardinia.

**Sitophilus zeamais Motschulsky, 1855**

**Fig. 93.** I, Sardinia, 5 km N Iglesias, near San Benedetto, N39°21'15" E08°31'15", 300m, sifting under *Quercus suber*, 9.10.2022, leg. Wartmann. Illustration supplement. Aedeagi: SEM in: Hidayat et al. 1996.

Note. Pest of stored grains. Certainly distinguishable from *Sitophilus oryzae* (Linnaeus, 1763) only via the aedeagus (median lobe: *S. zeamais* with a longitudinal groove, and with a smooth surface on *S. oryzae*); see Stüben 2018a: 405. Distribution. Subcosmopolitan.

**Cryptorhynchinae****Acalles sardiniensis Stüben, 2001**

**Fig. 94.** I, South Sardinia, E Cagliari, NP M. d. Sette Fratelli: M. Funtana-Ona, sifting under *Quercus*, *Arbutus*, *Pistacia*, N39°17'30" E09°23'17", 596 m, 3.10.2010, leg. Stüben (23), ♂. Illustration supplement. Aedeagus: same locality.

Note. Sister taxon of *Acalles dieckmanni* Péricart, 1989 from Corsica / GenBank: GU987882; KF680230; KF680231; KF680232; KF680233; KF680234; KF680235; MK891638.

Endemic: Sardinia.

**Acallornewma abbazzii Magrini & Paladini, 2017**

**Fig. 95.** Holotype (female): I, Sardinia, Siniscola (Nuoro), 29.V. 1911, leg. A. Dodero, coll. Museo Civico di Storia Naturale "G. Doria" di Genova (coll. G. Binaghi, acquisto 1976), ♀. Illustration supplement. Toothing of the front femur.

Note. See my detailed comment on the questionable species status of *Acallornewma abbazzii*, a species close to *Acallornewma montisalbi*, which has only been described from a single female; Stüben (2018b).

Endemic: Sardinia.

**Acallornewma mainardii A. & F. Solari, 1909**

**Fig. 96.** I, Sardinia, 9km S Lanusei: Ulassai, N39°48'35" E09°29'48", 700 m, crag, lime: sifting under *Quercus ilex*, 23.03.2005, leg. Stüben (9), ♂. Illustration supplement. Aedeagus: same locality.

Note. GenBank: KP776638.

Endemic: Sardinia.

**Acallornewma montisalbi G. Osella & Zuppa, 2002**

**Fig. 97.** I, East Sardinia, SW Siniscola, Monte Albo, N40°32'07" E09°36'13", 748 m, limestone: sifting under *Q. ilex*, 26.9.2010, leg. Stüben (2), ♂. Illustration supplement. Aedeagus: same locality.

Note. GenBank: KP776635; KP776633; MG229745.

Endemic: Sardinia.

**Acallornewma onnisi Magrini & Paladini, 2017**

Holotype (male): I, Sardinia, dintorni ingresso Grotta Su Pittiolu de Gospuru No. 1865 Sa/CA, 125 m. (Baccu Gospuru, Armungia, Cagliari), 6.3.2011, leg. P. Magrini (CM).

Note. Unfortunately, the authors were not willing to send the holotype (or at least one paratype) of the allegedly new species *Acallornewma onnisi* for further investigations in addition to the illustrations they compiled in their first description. Since none of the type specimens is in a publicly accessible institution, I am unable to verify the description based on the empirical evidence. However, according to the description (which, like all descriptions of their new *Acallornewma* species, is not accompanied by molecular analyses), it is a reasonable suspicion that this is a species already known from Sardinia.

Endemic: Sardinia.

**Acallornewma sardiniense osellai Magrini & Paladini, 2017**

**Fig. 98.** Holotype: I, Sardinia, Lula (Nuoro), VI.1911, leg. Dodero, coll. Museo Civico di Storia Naturale "G. Doria" di Genova, ♂. Illustration supplement. (Missing) long toothing of the front femur as in *Acallornewma sardiniense sardiniense*!

Note. *Acallornewma sardiniense osellai* was described after a single male from the same locus typicus in Sardinia as the nominotypic taxon (Lula, near Monte Albo). Interestingly, the holotype of the new species was also collected by Dodero in June 1911 and is almost certainly from the same sample (sieving) taken from the same locality mentioned above. Therefore, the authors rightly assume a sympatric occurrence (but without explicitly naming a barrier separating the two taxa), which in turn always speaks for one and the same taxon in such closely related populations. Sympatric speciation is extremely rare and rather unlikely in the animal kingdom! Since the differences in the aedeagi are rather marginal (Stüben 2018b), DNA samples will have to be taken at the *locus typicus* before a final synonymisation. However, this should have been done in the initial description in this particular case!

Endemic: Sardinia.

**Acallornewma sardiniense sardiniense G. Osella & Zuppa, 2002**

**Fig. 99.** I, Sardinia, above Baunei, 10 km N Tortoli, N40°01'58" E09°39'59", 637 m, crag, lime: sifting under *Quercus ilex*, 21.3.2005, leg. Stüben (2), ♂. Illustration supplement. Aedeagus: same locality.

Note. See my detailed comments on the two subspecies in: Stüben 2018b / GenBank: JX181781; KU170191.

Endemic: Sardinia.

**Dichromacalles diocletianus (Germar, 1817)**

**Fig. 100.** I, Sardinia, 4 km E Galtelli, Fiume Cedrino, 40°23'58.71"N, 9°39'12.42"E, 10 m, 10.5.2022, wetland near river, leg. Stüben (26). Illustration supplement. Aedeagus: Greece.

Note. Tapped from woody lower stems of thistles.

Distribution. Mediterranean.

**Dichromacalles rolletii (Germar, 1839)**

**Fig. 101.** I, Sardinia, 10 km N Tortoli, N40°01'17" E09°41'19", 335 m, *Euphorbia dendroides*, 20.3.2005, leg. Stüben (1), ♀.

Note. On *Euphorbia dendroides* and *E. myrsinites* (rarer on *E. characias*).

Distribution. Northern Mediterranean (FR,IT,GR).

**Echinodera (Ruteria) bellieri (Reiche, 1860)**

**Fig. 102.** I, Sardinia, near Dorgali: Passo Littu, 40°17'59.33"N, 9°37'57.44"E, 323 m, 13.5.2022, sifting under *Quercus*, leg. Stüben (35), ♀. Illustration supplement. Aedeagus: Sicily.

Note. GenBank: MG322659; MG322660; MG322662; MG322666; MG322663; MG322669; MG322672; MG229743.

Distribution. Northern Mediterranean (Sardinia, South Italy, Sicily, Northern Greece).

**Echinodera nuraghia Stüben, 2009**

**Fig. 103.** Holotype: I, Sardinia, 13 km NE Macomer: near Lei, Massiv de Marghine: Mt. Lameddara, N40°19'43" E08°54'04", 990 m, sifting under *Quercus ilex*, 29.10.2004, leg. Stüben (33), ♂. Illustration supplement. Aedeagus: same locality.

Note. Although this species - as molecular studies have shown - is not closely related to the following species *E. peragalloi* on Sardinia (p-distance of the mtCO1 subgene is 16.6%), the taxa are difficult to distinguish morphologically / GenBank: GU213685; MG322670.

Endemic: Sardinia.

**Echinodera peragalloi (Chevrolat, 1863)**

**Fig. 104.** I, Sardinia, Monte Albo: 1 km E Lula, 40°28'18.28"N, 9°30'6.14"E, 518 m, 11.5.2022, sifting, leg. Stüben (29), ♀. Illustration supplement. Aedeagus: Sardinia.

Note. Like almost all *Echinodera*, they are not only dependent on the leaf litter of deciduous trees (Colonnelli et al. 2011), but also live on perennial woody plants and in woody plant remains / GenBank: GU213697; MG322656; MG322657; MG322658; MG322661; MG322664; MG322671; MG322673; MG229742.

Distribution. Northern Mediterranean.

**Echinodera settefratelliensis Stüben, 2005**

**Fig. 105.** I, Sardinia, 7 km NE Villasalto: near Grotta Su Pittiolu de Gospuru, 39°31'56.43"N, 9°26'35.50"E, 90 m, 8.5.2022, *Pistacia*, sifting, leg. Stüben (19), ♀. Illustration supplement. Aedeagus: Sardinia.

Note. GenBank: GU213686; MG322665; MG322667; MG322668.

Endemic: Sardinia.

**Kykliocalles characivorus Stüben, 2005**

**Fig. 106.** Paratype: I, Sardinia, 15km SW Lanusei, Barbagia Seulo: Monte Arqueri, N39°49'36" E09°22'27", 960 m, 23.03.2005, *Euphorbia characias*, PTs, leg. Stüben, ♂. Illustration supplement. Aedeagus: same locality.

Note. From *Euphorbia characias*. / GenBank: EU286485.

Endemic: Sardinia.

**Onyxacalles nuraghi Stüben, 2012**

**Fig. 107.** Holotype: I, Sardinia, E Macomer: above Lei, N40°19'54" E08°53'49", 1020 m, 04.10.2010, *Quercus ilex*, *Acer monspessulanum*, leg. Stüben, ♂. Illustration supplement. Aedeagus: same locality.

Note. GenBank: JN121399; JN121400; MG229744.

Endemic: Sardinia.

**Poggionymus crassus Colonnelli, 1983**

**Fig. 108.** Holotype: I, Sardinia, Macomer, 600 m, 1.4.1909, leg. Solari, coll. Museo di Storia Naturale "G. Doria" (Genova), ♂.

Note. Very likely an introduced species from South or Central America.

**Torneuma abbazzii Stüben, 2007**

**Fig. 109.** Holotype: I, Sardinia, Torre Cala Regina (CA), 20 m, 1.12.1998, leg. Fancello, coll. Senckenberg, Deutsches Entomologisches Institut, ♂. Illustration supplement. Aedeagus: same locality.

Note. Upgraded to species status, see Stüben 2018a.

Endemic: Sardinia.

**Torneuma curtulum curtulum F. Solari, 1937**

**Fig. 110.** Holotype: I, Sardinia, Flumentorgiu, V.1895, leg. F. Solari, coll. Museo Civico di Storia Naturale di Milano (coll. Solari), ♂. Illustration supplement. Aedeagus: same locality.

Endemic: Sardinia.

**Torneuma curtulum vastum Stüben, 2007**

**Fig. 111.** Holotype: I, Sardinia, Escalaplano (NU), 10.12.1995, leg. Fancello, coll. Senckenberg, Deutsches Entomologisches Institut, ♂. Illustration supplement. Aedeagus: same locality.

Note. Originally the species was described by me as a subspecies of *Torneuma curtulum* F. Solari, 1937, because *T. c. vastum* can be distinguished from the nominotypical taxon only by its broader pronotum and shorter elytra that are at most 1.60x (vs. 1.75x) as long as wide. The aedeagus and endophallus are largely identical. Colonnelli and Osella (2009) raised *Torneuma curtulum vastum* to species level, but without any additional morphological justification given or (what would be a necessary precondition in this case) molecular studies! They only note: "...so the two taxa can be considered as sympatric. This implies that *Torneuma vastum* Stüben, 2007 (stat. rev.) is a self-standing species, and not a subspecies of *T. curtulum*" (p.424). But neither does their comparative maps with a few rough entries show that the species actually occur sympatrically, nor do they even begin to provide evidence that they have made a correct species identification at all (because the differences are really very difficult). The (quite tautological) conclusion, however, that in their opinion the sympatric occurrence already implies that there must be two independent species, is more than in need of explanation. Sympatric speciation is extremely rare and rather unlikely in the animal kingdom, so that the occurrence in the same habitat and the same ecological niche of species (that are also difficult to distinguish) is much more likely to indicate one and the same (variable) species! Such speculations lead nowhere (if one cannot even name further morphological differences), and the solution is

actually obvious in such stalemates: Just try 'Integrative Taxonomy' and occasionally throw your samples in ethanol!

***Torneuma damryi* (Perris, 1875)**

**Fig. 112.** I, Sardinia, Campeda, leg. Dodero, ♂. Illustration supplement. Aedeagus: Corsica.

Distribution. Corsica (type locality: Bonifacio) and Sardinia.

***Torneuma deplanatum raymondi* (Perris, 1870)**

**Fig. 113.** Lectotype: I, Sardinia; coll. von Heyden, in: Senckenberg, Deutsches Entomologisches Institut, ♂. Illustration supplement. Aedeagus: Sardinia.

Endemic. Sardinia.

***Torneuma minutum* (Perris, 1870)**

**Fig. 114.** Lectotype: I, Sardinia; coll. Senckenberg, Deutsches Entomologisches Institut, ♂. Illustration supplement. Aedeagus: same locality.

Endemic. Sardinia.

***Torneuma teuladense* Stüben, 2007**

**Fig. 115.** Holotype: I, Sardinia, near Teulada (CA), 100 m, 1.4.1977, leg. Vit, coll. Senckenberg, Deutsches Entomologisches Institut, ♂. Illustration supplement.

Aedeagus: same locality.

Endemic. Sardinia.



*Acentrus histrio* on *Glaucium flavum* (Sardinia, Posada) - Photos: Stüben.

**Curculioninae**

***Acentrus histrio* Boheman, 1845**

**Fig. 116.** I, Sardinia, 5 km NE Posada: Spiaggia di Matte e Peru, 40°39'53.05"N, 9°44'56.13"E, 2 m, 20.5.2022, leg. Stüben (48), ♂.

Note. On *Glaucium flavum*.

Distribution. Mediterranean, Southeast Europe.

***Anthonomus pomorum* (Linné, 1758)**

**Fig. 117.** I, Sardinia, Monte Albo: Funtana S'Adde, 40°33'22.88"N, 9°38'10.68"E, 735 m, 11.5.2022, leg. Stüben (31). Illustration supplement. Aedeagus: Germany.

Note. *Pyrus* and *Malus*.

Distribution. Holarctic.

***Anthonomus spilolus* Redtenbacher, 1849**

**Fig. 118.** I, Sardinia, Monte Albo: Funtana S'Adde, 40°33'22.88"N, 9°38'10.68"E, 735 m, 11.5.2022, leg. & det. Jacob. Illustration supplement. Aedeagus: Sardinia.

Note. On *Pyrus*, *Mespilus* and *Crataegus*.

Distribution. Southwest Europe; with isolated occurrences in southern Sweden and eastern Europe.

***Bradybatus fallax* Gerstaecker, 1860**

**Fig. 119.** I, Sardinia, 5.4 km S Fonni, 40°4'20"N, 9°16'40"E, 971 m, 14.10.2022, *Acer* spp., leg. Wartmann, ♀.

Note. On *Acer* spp.

Distribution. Europe.

***Archarius salicivorus* Paykull, 1792**

**Fig. 120.** I, Sardinia, Monte Limbara, 40°50'14.70"N, 9° 8'1.78"E, 1013 m, 16.5.2022, *Genista* spec., leg. Stüben (42).

Note. *Salix*.

Distribution. Palaearctic.

***Curculio glandium* Marsham, 1802**

**Fig. 121.** I, Sardinia, 5 km SE Calangianus, 40°53'35.38"N, 9°13'56.81"E, 608 m, 16.5.2022, leg. Stüben (41), ♀.

Note. On *Quercus*.

Distribution. Palaearctic.

***Cionellus gibbifrons* (Kiesenwetter, 1851)**

**Fig. 122.** I, Sardinia, Onifai, Lago Cedrino, 10.5.2022, leg. Casalini.

Note. On Oleaceae.

Distribution. Mediterranean.

***Dorytomus cf. taeniatus / dejeani* (Fabricius, 1781)**

**Fig. 123.** I, Sardinia, 21 km SO Aritzo, Barbagia Seulo: Monte Arqueri, N39°49'02" E09°21'59", 950 m, Lime/rock face, 22.10.2004, leg. Stüben (18); ♀. Illustration supplement. *D. taeniatus*: Rostrum straight / *D. dejeani*: Rostrum curved.

Note. It is neither morphologically nor molecularly clear which of the two *Dorytomus* species (*D. taeniatus* / *D. dejeani*) correspond to the specimens from Sardinia. It could also be a new sub/species (see: Stüben et al. 2015 / supplement). GenBank: KC784255.

Distribution. Western Palaearctic.

***Dorytomus rufatus* (Bedel, 1888)**

**Fig. 124.** I, Sardinia, 4 km E Galtelli, Fiume Cedrino, 40°23'58.71"N, 9°39'12.42"E, 10 m, 10.5.2022, wetland near river, leg. Wartmann, ♂. Illustration supplement. Aedeagus: Germany.

Note. On *Salix* spp. (Sprick in: CURCULIO Team 2008).

Distribution. Europe, Caucasus.

***Gymnetron niloticum* Kirsch, 1881**

**Fig. 125.** I, Sardinia, 4 km E Galtelli, Fiume Cedrino, 40°23'58.71"N, 9°39'12.42"E, 10 m, 10.5.2022, wetland near river, leg. Jacob, det. Caldara.

Note. Very similar to *Gymnetron tibiellum*, a species that also varies from reddish and black to completely black. According to Caldara, however, *G. niloticum* is much more densely scaled. Especially the sides of the pronotum are covered with dense and broad scales. Interstriae covered with 2-3 irregular rows of scales. (Caldara 2008)

Distribution. Mediterranean, Asia.

***Gymnetron rostellum* (Herbst, 1795)**

**Fig. 126.** I, Sardinia, 6.5 km S Fonni, 40°4'14"N, 9°16'21"E, 1254 m, 13.10.2022, leg. Wartmann, ♂.

Note. *Veronica* spp. (also reported from *Plantago* major, *Matricaria* spp., *Anthemis nobilis*; Hoffmann, 1958; Koch, 1992)

Distribution. Europe, Caucasus, Northwest Africa.

***Gymnetron tibiellum* Desbrochers, 1900**

**Fig. 127.** I, Sardinia, 4 km E Galtelli, Fiume Cedrino, 40°23'58.71"N, 9°39'12.42"E, 10 m, 10.5.2022, wetland near river, leg. Stüben / Jacob. Illustration supplement. Aedeagus: same locality.

Note. Very similar to *Gymnetron niloticum*, a species that also varies from reddish and black to completely black; see *G. niloticum* and Caldara (2008).

Distribution. Southeast Europe, Asia.

***Gymnetron villosulum* Gyllenhal, 1838**

**Fig. 128.** I, Sardinia, 7 km E Padru, 40°47'25.24"N, 9°36'0.86"E, 115 m, 17.5.2022, meadow by stream, leg. Stüben (44), ♂.

Note. On *Veronica anagallis-aquatica* agg.

Distribution. Europe, Turkey.

***Mecinus barbarus* Gyllenhal, 1838**

**Fig. 129.** I, Sardinia, 5 km SE Calangianus, 40°53'35.38"N, 9°13'56.81"E, 608 m, 16.5.2022, leg. Stüben (41). Illustration supplement. Aedeagus: Portugal.

Note. On genera *Linaria*, *Anarrhinum* and *Antirrhinum* (Caldara & Fogato 2013).

Distribution. Mediterranean, Canary Islands.

***Mecinus circulatus* (Marshall, 1802)**

**Fig. 130.** I, Sardinia, 4km N San Vito: am Flumendosa, 39°28'38.47"N, 9°31'59.85"E, 15 m, 5.5.2022, leg. Stüben (11). Illustration supplement. Aedeagus: La Gomera.

Note. On *Plantago*.

Distribution. Mediterranean, South East Europe, Canary Islands.

***Mecinus comosus* Boheman, 1845**

**Fig. 131.** I, Sardinia, 2km S La Caletta, 40°35'38.31"N, 9°45'4.85"E, 2 m, 12.5.2022, sifting, Dune vegetation, leg. Stüben (32). Illustration supplement. Aedeagus (Caldara & Fogato 2013).

Note. On *Plantago*.

Distribution. Mediterranean.

***Mecinus pascuorum* (Gyllenhal, 1813)**

**Fig. 132.** I, Sardinia, Costa Smeralda (Golfo Aranci: Spiaggia Bianca), 40°59'27.47"N, 9°35'34.86"E, 3 m, 18.5.2022 leg. Stüben (47). Illustration supplement. Aedeagus: Germany.

Note. On *Plantago*.

Distribution. Palaearctic.

***Mecinus pyraeter* (Herbst, 1795)**

**Fig. 133.** I, Sardinia, 4 km E Galtelli, Fiume Cedrino, 40°23'58.71"N, 9°39'12.42"E, 10 m, 10.5.2022, wetland near river, leg. & det. Wartmann, ♂.

Note. On *Plantago*.

Distribution. Western Palaearctic; introduced in North America.

***Mecinus variabilis* (Rosenhauer, 1856)**

**Fig. 134.** I, Sardinia, S Costa Rein: Cala Sinzias, 39°11'31.47"N, 9°33'44.13"E, 6 m, 7.5.2022, beach vegetation and meadow, leg. Stüben (18). Illustration supplement. Aedeagus: Morocco.

Note. On *Plantago*.

Distribution. Western Mediterranean, Canary Islands.

***Miarus afer* Daniel, 1912**

**Fig. 135.** I, Sardinia, 5 km SE Calangianus, 40°53'35.38"N, 9°13'56.81"E, 608 m, 16.5.2022, leg. Stüben (41), ♂, det. Caldara. Illustration supplement. Aedeagus: same locality.

Note. So far known only from North Africa. Type locality: Algeria, Massif de Mouzaïa; (see Caldara 2007).

Distribution. North Africa, new record for Sardinia.



*Sibirina femoralis* on *Silene nicaeensis* (Sardinia, La Caletta) - Photos: Stüben.

***Orchestes irroratus* Kiesenwetter, 1851**

**Fig. 136.** I, Sardinia, E Cagliari, NP M. d. Sette Fratelli: M. Funtana-Ona, 39°17'30"N, 9°23'17"E, 596 m, *Quercus*, 3.10.2010, leg. Stüben (23), ♂. Illustration supplement. Aedeagus: Spain.

Note. On *Quercus* spp. / GenBank: KC784276.

Distribution. Southwestern Europe.

***Orthochaetes insignis* (Aubé, 1863)**

**Fig. 137.** I, Sardinia, Mt. Gennargentu 13 km NW Lanusei: river Flumendosa, N39°56'17" E09°23'59", 660 m, sifting under *Quercus ilex*, *Rhamnus*, moss, 23.10.2004, leg. Stüben (20).

Distribution. Western Mediterranean, Madeira, Azores.

***Pachytychius hordei grandicollis* (Waltl, 1835)**

**Fig. 138.** I, Sardinia, 4 km E Galtelli, Fiume Cedrino, 40°23'58.71"N, 9°39'12.42"E, 10 m, 10.5.2022, wetland near river, leg. Stüben (26).

Note. On brooms.

Distribution. Mediterranean.

***Rhinusa tetra* (Fabricius, 1792)**

**Fig. 139.** I, Sardinia, 5km E Villasalto: Domueu (close to a creek), 39°29'32.94"N, 9°26'52.46"E, 53 m, 5.5.2022, leg. Stüben (10), ♂.

Note. On *Verbascum* spp. and *Scrophularia* spp. A very variable species in terms of size differences / GenBank: KC784245.

Distribution. Palaearctic; introduced in North America.

***Sibinia attalica* Gyllenhal, 1836**

**Fig. 140.** I, Sardinia, 7 km E Padru, 40°47'25.24"N, 9°36'0.86"E, 115 m, 17.5.2022, meadow by stream, leg. Stüben (44), ♂.

Note. On *Silene*.

Distribution. Mediterranean, southeastern Europe.

***Sibinia femoralis* Germar, 1824**

**Fig. 141.** I, Sardinia, 2km S La Caletta, 40°35'38.31"N, 9°45'4.85"E, 2 m, 12.5.2022, sifting, dune vegetation: *Silene nicaeensis*, leg. Stüben (32), ♀.♂.

Illustration supplement. Aedeagus: Spain.

Note. On *Silene* (see also Stüben 2022).

Distribution. Palaearctic.

***Sibinia seriata* Desbrochers, 1873**

**Fig. 142.** I, Sardinia, Fonni, 1000 m, 12.5.2022, leg. Casalini, det. Caldara.

Note. On *Spergularia*.

Distribution. Corsica and Sardinia.



*Tychius capucinus* on *Lotus creticus* (Sardinia, La Caletta) - Photos: Stüben.

***Tychius argentatus* Chevrolat, 1859**

**Fig. 143.** I, Sardinia, 16 km NE Lula: Monte Albo, N40°33'30" E09°38'05", 750 m, below a limestone rock face, 19.10.2004, leg. Stüben (9), ♂. Illustration supplement. Aedeagus: Sicily.

Note. On *Lotus* (see also Stüben 2022).

Distribution. Mediterranean, southeastern Europe, Canary Island.

***Tychius bicolor* C. Brisout, 1862**

**Fig. 144.** I, Sardinia, Costa Smeralda (Golfo Cugnana), 41° 1'7.69"N, 9°30'57.14"E, 1 m, 18.5.2022, *Melilotus*, leg. Stüben (46), ♀.♂. Illustration supplement. Aedeagus: La Gomera.

Note. On *Melilotus officinalis* and *Astragalus monspessulanus*(?) (see Sprick, in: Curculio Team 2010).

Distribution. Mediterranean, Asia, Canary Islands, Madeira.

***Tychius capucinus* (Boheman, 1843)**

**Fig. 145.** I, Sardinia, N Costa Rein: S Capo Ferrato, 39°17'20.82"N, 9°35'59.22"E, 3 m, 7.5.2022, beach vegetation and meadow: *Lotus creticus*, leg. Stüben (17).

Note. On *Lotus* spec.

Distribution. Western Mediterranean.

***Tychius corsosardous* Caldara, 2013**

(formerly *Tychius bivittatus* Perris, 1866, Homonym)

**Fig. 146.** I, Sardinia, 4 km N Urzulei, 40° 7'10.82"N, 9°28'59.80"E, 890 m, *Genista corsica*, 14.5.2022, leg. Stüben (38), ♂.

Note. On *Genista Corsica*, *Genista pichisermolliana* (in litt. R. Casalini).

Distribution. Corsica and Sardinia.

***Tychius cuprifer* (Panzer, 1799)**

**Fig. 147.** I, Sardinia, 4 km E Galtelli, Fiume Cedrino, 40°23'58.71"N, 9°39'12.42"E, 10 m, 10.5.2022, wetland near river, leg. Jacob, ♂. Illustration supplement. Aedeagus: Hungary.

Note. On *Trifolium* spp.

Distribution. Western Palaearctic.

***Tychius decretus* Tournier, 1873**

**Fig. 148.** I, Sardinia, 6 km S Orsei: Spiaggia di Osalla, 40°19'48.08"N, 9°40'33.46"E, 2 m, 9.5.2022, sandy beach: *Ononis repens*, leg. Stüben (24). Illustration supplement. Aedeagus: Italy.

Note. On *Ononis repens* and *Trifolium* spp.

Distribution. Western Mediterranean.

***Tychius depressus* Desbrochers, 1873**

**Fig. 149.** I, Sardinia, 4 km E Galtelli, Fiume Cedrino, 40°23'58.71"N, 9°39'12.42"E, 10 m, 10.5.2022, wetland near river, leg. Stüben (26), det. Caldara. Note. Apparently monophagous on *Medicago polymorpha* (see Skuhrovec et al. 2014a).

Distribution. Western Mediterranean.

***Tychius funicularis* C. Brisout, 1862**

**Fig. 150.** I, Sardinia, near Cala Gonone, 40° 17'12"N, 9°37'57"E, 64 m, 8.5.2022, leg. & det. Wartmann / Stüben, ♂. Illustration supplement. Aedeagus: same locality.

Note. On *Vicia cracca incana* and *Vicia tenuifolia* (CURCULIO Team 2010).

Distribution. Western Mediterranean.

***Tychius grenieri* C. Brisout, 1861**

**Fig. 151.** I, Sardinia, 6 km W Siniscola, 40°33'37"N, 9°38'4"E, 777 m, 17.10.2022, leg. Wartmann, ♂.  
Note. On *Astragalus* spp.  
Distribution. Mediterranean, Asia.

***Tychius meliloti* Stephens, 1831**

**Fig. 152.** I, Sardinia, Costa Smeralda (Golfo Cugnana), 41° 1'7.69"N, 9°30'57.14"E, 1 m, 18.5.2022, *Melilotus*, leg. Stüben (46), ♀. Illustration supplement. Rostrum (lateral): same locality.  
Note. On *Melilotus* spp.  
Distribution. Palaearctic.

***Tychius polylineatus* (Germar, 1824)**

**Fig. 153.** I, Sardinia, S Costa Rein: Cala Sinzias, 39°11'31.47"N, 9°33'44.13"E, 6 m, 7.5.2022, beach vegetation and meadow, leg. Stüben (18). Illustration supplement. Aedeagus: Italy.  
Note. On *Trifolium* spp.  
Distribution. Western Palaearctic.

***Tychius pusillus* Germar, 1842**

**Fig. 154.** I, Sardinia, 33 km NE Cagliari: Sarrabus, Rio di Cannas, N39°20'52" E09°27'18", 110 m, 25.10.2004, leg. Stüben (26). Illustration supplement. Aedeagus: Germany.  
Note. On *Trifolium* spp.  
Distribution. Western Palaearctic.

***Tychius tibialis* Boheman, 1843**

**Fig. 155.** I, Sardinia, 5 km SE Calangianus, 40°53'35.38"N, 9°13'56.81"E, 608 m, 16.5.2022, leg. Stüben (41), ♂. Illustration supplement. Aedeagus: Slovakia.  
Note. On *Trifolium* spp.  
Distribution. Europe, North Africa, Turkey.

***Smicronyx albosquamosus* Wollaston, 1854**

**Fig. 156.** I, Sardinia, 10.5 km NE Macomer, near Silanus, Massiv de Marghine, 40° 18'55"N, 8°52'35"E, 930 m, 27.10.2004, leg & det. Germann, ♂.  
Note. On *Cuscuta* spp.  
Distribution. Mediterranean, Canary Islands.

***Smicronyx jungermanniae* (Reiche, 1797)**

**Fig. 157.** I, Sardinia, near Cala Gonone, 40° 17'12"N, 9°37'57"E, 64 m, 8.5.2022, leg. & det. Wartmann, ♀, det. Haran (via photo).  
Note. On *Cuscuta* spp.  
Distribution. Western Palaearctic.

**Cyclominae*****Cycloderes canescens* (Rossi, 1792)**

**Fig. 158.** I, Sardinia, E Seui: M. Arqueri, 39°49'36"N, 9°22'27"E, 960 m, 29.9.2010, leg. Stüben (11), det. Behne.  
Note. GenBank: KC784273.  
Distribution. Southern Europe, Asia.

***Dichotrachelus sardous* A. Solari & F. Solari, 1903**

**Fig. 159/160.** I, Sardinia, NE Aritzo: Gennargentu, M. di Iscudu, N40°01'10" E09°16'39", 1511 m, brook, sifting under alder, moss, 30.9.2010, leg. Stüben (14), ♂, ♀.  
Note. GenBank: KC784246.  
Endemic. Sardinia.

**Entiminae*****Barypeithes metallicus* Stierlin, 1868 [currently: *Exomias* Bedel]**

**Fig. 161/162.** I, East Sardinia, 1.3 km NW Neoneli, N40°04'07" E08°55'56", 388 m, 17.10.2010, sifting under *Quercus*, *Gnista*, leg. Wartmann, ♂ and ♀. Illustration supplement. Aedeagus: same locality.  
Note. A rarely collected species.  
Distribution. Sicily, Sardinia.

***Brachyderes illaesus* Boheman, 1833**

**Fig. 163.** I, East Sardinia, E Siniscola: La Caletta (coast), N40°35'30" E09°45'25", 3 m, 9.10.2010, leg. Stüben (38), det. Behne, ♂. Illustration supplement. Elytra acuminate at the apex.  
Note. On pines /GenBank: KC784265.  
Distribution. Western Mediterranean.

***Brachyderes incanus* (Linné, 1758)**

**Fig. 164.** I, Sardinia, 2km S La Caletta, 40°35'38.31"N, 9°45'4.85"E, 2 m, 12.5.2022, sifting, dune vegetation, leg. Stüben (32)  
Note. On young pines.  
Distribution. Europe.

***Brachyderes pubescens* Boheman, 1833**

**Fig. 165.** I, Sardinia, 2 km N Urzulei, 40° 6'24.51"N, 9°30'4.15"E, 959 m, beaten from *Quercus ilex*, 10.5.2022, leg. Jacob, det. Jacob, ♀.  
Note. On *Quercus* / GenBank: KC784274.  
Distribution. Western Mediterranean.

***Brachysomus hirtus* Boheman, 1845**

**Fig. 166.** I, Sardinia, NW Bolótana, *Quercus*, shale, sifting, N40°20'57" E08°55'54", 961 m, 14.05.2014, Stüben & Schütte (29).  
Distribution. Europe.

***Cathomiorcerus hircus* Desbrochers, 1896**

**Fig. 167.** I, Sardinia, 6 km S Fonni, N40°04'20" E9°16'40", 1277 m, 13.10.2022, under *Quercus*, leg. Wartmann, ♀.  
Distribution. Western Mediterranean.

***Caulostrophus subsulcatus* (Boheman, 1833)**

**Fig. 170.** I, Sardinia, 5 km SE Calangianus, 40°53'35.38"N, 9°13'56.81"E, 608 m, 16.5.2022, leg. Stüben (41)  
Note. Adults seem polyphagous (Abbazzi & Maggini 2009) / GenBank: KC784270.  
Distribution. South Europe, North Africa.

***Charagmus intermedius* (Küster, 1847)**

**Fig. 171.** I, Sardinia, 2 km NW Bono: Massiv de Goceano: Pso. Uccaidu, N40°25'51" E09°00'40", 980 m, 29.10.2004, leg. Stüben (34). Illustration supplement. Aedeagus: Cyprus.  
Note. On Fabaceae. Sprick (in: CURCULIO Team 2006) names as preferred host plant *Hippocrepis comosa* / GenBank: KC784249  
Distribution. South Europe.

***Charagmus variegatus* (Fähræus, 1840)**

**Fig. 172.** I, Sardinia, near Muravera: Spiaggia di San Giovanni, 39°23'32.14"N, 9°36'33.45"E, 1 m, 6.5.2022, leg. Stüben (16), ♂. Illustration supplement. Aedeagus: Sicily.  
Note. On *Lotus* spp.  
Distribution. Western Mediterranean, Canary Islands, Turkey.

***Coelositona puberulus* Reitter, 1903**

**Fig. 173.** I, Sardinia, 2km S La Caletta, 40°35'38.31"N, 9°45'4.85"E, 2 m, 12.5.2022, sifting, dune vegetation: *Lotus*, leg. Stüben (32)  
Note. On Fabaceae. Larvae ectophagously at the roots.  
Distribution. Western Mediterranean, South Europe, Iran.

***Dolichomeira ichnusae* Pierotti & Bellò, 2000**

**Fig. 185.** I, South Sardinia, 5km N Iglesias, near S. Benedetto, limestone: sifting under *Quercus ilex*, *Euphorbia characias*, *Euphorbia dendroides*, N39°21'47" E08°32'35", 474 m, 31.03.2005, leg. Stüben (32), det. Pierotti, ♂. Illustration supplement. Aedeagus: Endophallus (Pierotti & Bellò 2000).  
Endemic. Sardinia.

***Dolichomeira olearia* Pierotti & Bellò, 2000**

**Fig. 186.** I, West-Sardinia, 13km NW Iglesias, near Buggerru, N39°23'41" E08°24'34", 242 m, limestone rocks: garrigue, sifting under *Pistacia lentiscus*, 28.03.2005, leg. Stüben (23), det. Pierotti, ♂. Illustration supplement. Aedeagus: Endophallus (Pierotti & Bellò 2000).  
Endemic. Sardinia.

***Dolichomeira philippi* Pierotti & Bellò, 2000**

**Fig. 187.** I, Sardinia, Isola di S. Antioco, near M. Arbus, N38°58'39" E08°26'18", 70 m, garrigue, 30.03.2005, leg. Stüben (29), det. Pierotti. Illustration supplement. Aedeagus: Endophallus (Pierotti & Bellò 2000).  
Endemic. Sardinia.

***Dolichomeira plumbariae* Pierotti & Bellò, 2000**

**Fig. 188.** I, Sardinia, Isola di S. Antioco, near M. Arbus, N38°58'39" E08°26'18", 70 m, garrigue, 30.03.2005, leg. Stüben (29), det. Pierotti, ♂. Illustration supplement. Aedeagus: Endophallus (Pierotti & Bellò 2000).  
Endemic. Sardinia.

***Heteromeira proxima* (F. Solari, 1955)**

**Fig. 189.** I, Sardinia, Ulassai, limestone, rock edge, sifting under *Quercus*, N39°48'35", E09°29'48", 723 m, 12.05.2014, Stüben & Schütte (21), det. Pierotti. Illustration supplement. Aedeagus: Endophallus (Pierotti 2011).  
Endemic. Sardinia.

***Leptomeira meregallii* Pierotti & Bellò, 1997**

**Fig. 190.** I, Sardinia, Mti. Gennargentu, 10 km NO Aritzo: Brcu. Spina, 40°00'44"N, 9°17'24"E, 1560 m, *Quercus ilex*, 22.20.2004, leg. Germann, det. Pierotti.  
Endemic. Sardinia.

***Meirella minima* (Stierlin, 1861)**

**Fig. 191.** Neotype: I, Sardinia, 21 km SO Aritzo, Barbagia Seulo: Monte Arqueri, N39°49'02" E09°21'59", 950 m, limestone/rock face: sifting under *Quercus ilex*, 22.10.2004, leg. Stüben (18), det. Pierotti.  
Endemic. Sardinia.

***Otiiorhynchus alutaceus* (Germar, 1817)**

**Fig. 205.** I, Sardinia, 16 km NE Lula: Monte Albo, N40°33'30" E09°38'05", 750 m, limestone/rock face: under stones, 19.10.2004, leg. Wartmann, det. Germann, ♀.  
Note. New record for Sardinia.  
Distribution: Southern Europe.

***Otiiorhynchus aurifer* Boheman, 1842**

**Fig. 206.** I, Sardinia, 4 km N Urzulei, 40° 7'10.82"N, 9°28'59.80"E, 890 m, 14.5.2022, sifting under *Quercus*, *Euphorbia characias*, leg. Stüben (38), det. Germann.  
Note. GenBank: KC784269.  
Distribution: Europe, Turkey.

***Otiiorhynchus crataegi* Germar, 1824**

**Fig. 207.** I, Sardinia, E Sarùle, N.S. Di Gonari (chapel), *Quercus ilex*, rock edge, sifting (soil), N40°13'41", E09°12'00", 1005 m, 17.05.2014, leg. Stüben & Schütte (41).

Note. Originally from the Balkans; culture followers; the species is counted among the invasive species and can now often be found in tree nurseries and gardens (see Sprick & Stüben 2012, SNextra).

Distribution. Southeastern Europe, introduced in many other countries in Europe.

**Otiorynchus guttula assimilis Gemminger, 1871**

**Fig. 208.** I, Sardinia, Mti. Gennargentu, 10 km NO Aritzo: Brcu. Spina, 40°00'44"N, 9°17'24"E, 1560m, *Quercus ilex*, 22.20.2004, leg. & det. Germann, ♀.

Endemic. Sardinia.

**Otiorynchus intrusus Reiche, 1862**

**Fig. 209.** I, Sardinia, Ostküste, 10km N Tortoli, N40°01'17" E09°41'19", 335 m, sieved below rock face (lime): *Ceratonia siliqua*, *Euphorbia dendroides*, 20.3.2005, leg. Stüben (1), ♀.

Distribution. Corsica and Sardinia.

**Otiorynchus parvicollis Gyllenhal, 1834**

**Fig. 210.** I, Sardinia, near Cala Gonone, on a wall, night catch, 40° 17'12"N, 9°37'57"E, 64 m, 10.5.2022, leg. Wartmann, det. Germann, ♀.

Note. New for Sardinia!

Distribution: Western Mediterranean, Azores.

**Otiorynchus rugosostriatus (Goeze, 1777)**

**Fig. 211.** I, Sardinia, SW Macomer, M. Ferru, near S. Leonardo, *Quercus*, 40°11'3"N, 8°40'9"E, 697 m, 7.10.2010, leg. Stüben (34), ♀.

Note. This parthenogenetic species has been introduced from Europe and northern Africa to North America, Trinidad, Cuba, Bolivia and even New Zealand / GenBank: KC784262.

Distribution: Europe, Turkey, Morocco.

**Pachyrhinus lethierryi (Desbochers, 1875)**

**Fig. 212.** I, Sardinia, 2 km N Urzulei, 40° 6'24.51"N, 9°30'4.15"E, 959 m, beating from *Juniperus*, 10.5.2022, leg. Stüben (27)

Note. *Juniperus* spp.; see also Gosik et al. 2010. *P. lethierryi lostiae* - supposedly endemic to Sardinia - is probably just a synonym of *P. lethierryi*!

Distribution. France, Italy; introduced in many other countries in Europe and Turkey.



*Pachyrhinus lethierryi* on *Juniperus* (Sardinia, near Urzulei) - Photos: Stüben.

**Polydrusus cervinus (Linné, 1758)**

**Fig. 213.** I, Sardinia, near Dorgali, 40°18'11.52"N, 9°37'53.00"E, 223 m, 13.5.2022, leg. Stüben (34). Illustration supplement. Aedeagus: Germany.

Note. Variety of deciduous trees (e.g. *Quercus*, *Betula*, *Acer*)

Distribution. Eurosiberia.

**Polydrusus leucaspis Boheman, 1840**

**Fig. 214.** I, Sardinia, Environs Cala Conone, 40°16'39.45"N, 9°37'22.06"E, 9-90 m, 9.5.2022, *Quercus* forest / coast, leg. Stüben (22)

Note. On *Quercus* spp. (probably oligophagous).

Distribution. Corsica and Sardinia.

**Polydrusus parallelus Chevrolat, 1860**

**Fig. 215.** I, Sardinia, Monte Albo: 1 km E Lula, 40°28'18.28"N, 9°30'6.14"E, 518 m, 11.5.2022, *Quercus*, leg. Stüben (29)

Note. On *Quercus* spp. (probably oligophagous).

Distribution. Southern Europe.

**Phyllobius pellitus Boheman, 1843**

**Fig. 216.** I, Sardinia, S Ulàssai: Mt. P. Corongiu, *Quercus*, limestone, rock edge, sifting, N39°46'05" E09°29'49", 763 m, 12.05.2014, Stüben & Schütte (22).

Distribution. Corsica, Sardinia.

**Phyllobius pilipes Desbrochers, 1872**

**Fig. 217.** I, Sardinia, 2 km N Lula, N40°28'48" E09°30'11", 510 m, 11.05.2022, *Quercus ilex*, leg. & det. Wartmann, ♀. Illustration supplement. Long elytral bristles.

Endemic. Sardinia.

**Pseudomeira eleonora Pierotti & Bellò, 1996**

**Fig. 192.** I, Sardinia, Mti. Gennargentu, 10 km NO Aritzo: Brcu. Spina, N40°00'44" E09°17'24", 1580 m, sifting under moss, broom, *Quercus ilex*, 22.10.2004, leg. Stüben (15), det. Pierotti.

Note. GenBank: KC784275.

Endemic. Sardinia.

***Pseudomeira inopinata* Pierotti & Bellò, 1996**

**Fig. 193.** I, West-Sardinia, 13 km NW Iglesias, near Buggerru, N39°23'41" E08°24'34", 242 m, limestone rocks: garrigue, *Pistacia lentiscus* (sifting), 28.03.2005, leg. Stüben (23), det. Pierotti, ♂. Illustration supplement. Aedeagus: Endophallus (Pierotti 1996).  
Endemic. Sardinia.

***Pseudomeira montisalbii* Pierotti & Bellò, 1996**

**Fig. 194.** I, Sardinia, 16 km NE Lula: Monte Albo, N40°33'30" E09°38'05", 750 m, limestone/rock face: sifting under *E. characias*, *Quercus ilex*, moss, 19.10.2004, leg. Stüben (9), det. Pierotti. Illustration supplement. Aedeagus: Endophallus (Pierotti 1996).  
Endemic. Sardinia.

***Pseudomeira sardoa* A. Costa, 1884**

**Fig. 195.** I, Sardinia, 5 km NE Dorgali, Monte Irveri, N40°18'00" E09°38'04", 360 m, limestone: sifting under *Quercus ilex*, 18.10.2004, leg. Stüben (2); det. Pierotti, ♀. Illustration supplement. Aedeagus: Endophallus (Pierotti 1996) - *Pseudomeira prope sardoa* (Costa), dell'Is. Tavolara.  
Note. GenBank: KC784243.  
Endemic. Sardinia.

***Pseudomeira transversicollis* F. Solari, 1955**

**Fig. 196.** I, South Sardinia, 33km NE Cagliari: Sarrabus, Rio di Cannas, N39°20'52" E09°27'18", 110 m, sifting under *Q. ilex*, *Arbutus*, *Salix*, *Mastix*, 27.03.2005, leg. Stüben (21); det. Pierotti, ♂. Illustration supplement. Aedeagus: Endophallus (Pierotti 1996)  
Note. GenBank: KC784253.  
Endemic. Sardinia.

***Rhytideres plicatus* (Olivier, 1790)**

**Fig. 218.** Torso: I, Sardinia, 5 km NE Posada: Spiaggia di Matte e Peru, 40°39'53.05"N, 9°44'56.13"E, 2 m, 20.5.2022, under *Glaucium flavum*, leg. Stüben (48).  
Distribution. Mediterranean, Canary Islands, Madeira.

***Simmeiropsis astragali* (Stierlin, 1861)**

**Fig. 197.** I, Sardinia, 9 km SW Lanusei: Ulassai, N39°48'35" E09°29'48", 700 m, Lime/rock face: sifting under *Euphorbia characias*, *Helleborus corsicus*, *Quercus ilex*, *Rubus*, 24.10.2004, leg. Stüben (22); det. Pierotti, ♂. Illustration supplement. Aedeagus: Endophallus (Pierotti & Bellò 2006).  
Note. GenBank: KC784272.  
Endemic. Sardinia.

***Simmeiropsis germanni* (Pierotti & Bellò, 2006)**

**Fig. 198.** Paratype: I, Sardinia, Dorgali (NU) m. Bardia, 300 m, 27.5.2002 leg. Bellò. Illustration supplement. Aedeagus: Endophallus (Pierotti & Bellò 2006).  
Endemic. Sardinia.

***Simmeiropsis ignorata* (A. Solari & F. Solari, 1922)**

**Fig. 199.** I, Sardinia, 13,5 km SO Aritzo, Barbagia Seulo: Grotta De Is Janas, N39°50'45" E09°15'58", 760 m, lime: sifting under *Quercus ilex*, 22.10.2004, leg. Stüben (17), det. Pierotti. Illustration supplement. Aedeagus: Endophallus (Pierotti & Bellò 2006).  
Endemic. Sardinia.

***Simmeiropsis montana* (A. Solari & F. Solari, 1922)**

**Fig. 200.** I, Sardinia, Mti. Gennargentu, 10 km NO Aritzo: Brcu. Spina, N40°00'44" E09°17'24", 1580 m, sifting under moss, broom, *Quercus ilex*, 22.10.2004, leg. Stüben (15), det. Pierotti, ♀. Illustration supplement. Aedeagus: Endophallus (Pierotti & Bellò 2006).  
Endemic. Sardinia.

***Simmeiropsis osellai* (Pierotti & Bellò, 2006)**

**Fig. 201.** Paratype: I, Sardinia, Ostküste, M. Ginnirco, 13km N Tortoli, N40°02'47" E09°41'40", 629 m, limestone: sifting under *Quercus ilex*, 24.3.2005, leg. Stüben (13), det. Pierotti, ♀. Illustration supplement. Aedeagus: Endophallus (Pierotti & Bellò 2006).  
Endemic. Sardinia.

***Simmeiropsis ottonis* (Reitter, 1913)**

**Fig. 202.** I, Sardinia, 3 km E Lula: Monte Albo, N40°28'29" E09°31'31", 680 m, Lime/rock face: sifting under *Quercus ilex*, 29.10.2004, leg. Stüben (36), det. Pierotti. Illustration supplement. Aedeagus: Endophallus (Pierotti & Bellò 2006).  
Endemic. Sardinia.

***Simmeiropsis tenuisetis* (Pierotti & Bellò, 2006)**

**Fig. 203.** Paratype: I, Sardinia, Villanova Tulo (NU), 700 m, 20.5.94 leg. Bellò. Illustration supplement. Aedeagus: Endophallus (Pierotti & Bellò 2006).  
Endemic. Sardinia.

***Simmeiropsis virginum* (Pierotti & Bellò, 2006)**

**Fig. 204.** Paratype: I, Sardinia, 6 km NNO Dorgali: Grotta di Ispinigoli, N40°19'06" E09°36'23", 260 m, limestone: sifting under *Quercus ilex*, 18.10.2004, leg. Stüben (3), det. Pierotti, ♀. Illustration supplement. Aedeagus: Endophallus (Pierotti & Bellò 2006).  
Note. GenBank: KC784242.  
Endemic. Sardinia.

***Sitona cinnamomeus* (Allard, 1863)**

**Fig. 174.** I, Sardinia, near NW Bitti, 40°30'13.72"N, 9°20'34.49"E, 731 m, 15.5.2022, leg. Stüben (39). Illustration supplement. Aedeagus: Sardinia.  
Note. On Fabaceae.  
Distribution. Southern Europe.

***Sitona discoideus* (Gyllenhal, 1834)**

**Fig. 175.** I, East Sardinia, E Oliena: near Su Gologone, above river, N40°17'15" E09°30'29", 161 m, 5.10.2010, leg. Stüben (29). Illustration supplement. Aedeagus: La Palma.  
Note. On *Medicago* spp. / GenBank: KC784235; KC784241.  
Distribution. Western Mediterranean, Macaronesia.

***Sitona gemellatus* Gyllenhal, 1834**

**Fig. 176.** I, Sardinia, Costa Smeralda (Golfo Aranci: Spiaggia Bianca), 40°59'27.47"N, 9°35'34.86"E, 3 m, 18.5.2022 leg. Stüben (47).  
Note. On Fabaceae.  
Distribution. Euro-Mediterranean.

***Sitona humeralis* Stephens, 1831**

**Fig. 177.** I, East Sardinia, N Dorgali, near Grotta di Ispinigoli, N40°19'12" E09°36'00", 241 m, on rock face, lime, 26.9.2010, leg. Stüben (4). Illustration supplement. Aedeagus.  
Note. On *Medicago* spp.  
Distribution. Palaearctic.

***Sitona lineatus* (Linnaeus, 1758)**

**Fig. 178.** I, Sardinia, S San Teodoro, 40°45'32.06"N, 9°40'46.29"E, 18 m, 17.5.2022, meadow by stream, leg. Stüben (45).  
Note. On Fabaceae.  
Distribution. Palaearctic.

***Sitona macularius* (Marshall, 1802)**

**Fig. 179.** I, Sardinia, 2 km N Murta Maria: Spiaggia le Salina, 40°54'9.80"N, 9°34'39.14"E, 2 m, 22.5.2022, beach vegetation: *Lotus*, leg. Stüben (50).  
Note. On Fabaceae.  
Distribution. Western Palaearctic.

***Sitona ophthalmicus* Desbrochers, 1869**

**Fig. 180.** I, Sardinia, Fonni, 1000 m, 13.5.2022, leg. Casalini.  
Note. On *Astragalus*. So far known only from *Astragalus monspessulanus* L. (Hoffmann 1950), a Fabaceae that occurs in all regions of Italy except Sardinia.  
Distribution. Mediterranean, Middle Asia.

***Sitona puncticollis* Stephens, 1831**

**Fig. 181.** I, Sardinia, Berchiddeddu, 40°49'26.66"N, 9°27'14.74"E, 248 m, 15.5.2022, leg. Stüben (40), det. Velázquez/Stüben, ♂. Illustration supplement. Aedeagus: Morocco.  
Note. On *Trifolium* spp.  
Distribution. Western Palaearctic.

***Sitona sulcifrons argutulus* (Gyllenhal, 1834)**

**Fig. 182.** I, Sardinia, 4 km E Galtelli, Fiume Cedrino, 40°23'58.71"N, 9°39'12.42"E, 10 m, 10.5.2022, wetland near river, leg. Wartmann, det. Stüben, ♂.  
Note. On *Trifolium* spp.  
Distribution. Southern and Eastern Europe.

***Sitona verecundus* (Rossi, 1790)**

**Fig. 183/184.** I, Sardinia, 2 km NW Bono: Massiv de Goceano: Pso. Uccaidu, 40°25'51"N, 9°00'40"E, 980 m, 29.10.2004, gorse, leg. Germann.  
Note. On Fabaceae (broom, gorse).  
Distribution. Southern Europe, Syria.

***Strophomorphus porcellus* (Schönherr, 1832)**

**Fig. 219.** I, Sardinia, 9 km SE Alghero: near coast, N40°30'02" E08°22'17", 45 m, under stones in the field, *Pistacia lentiscus*, 28.10.2004, leg. Stüben (32)  
Distribution. Europe, Asia, Egypt.

***Strophosoma melanogrammum* (Forster, 1771)**

**Fig. 220.** I, Sardinia, NE Aritzo, above Désulo: Mt. d. Iscudu, Alnus, creek, sifting, N40°01'26" E09°16'11", 1361 m, 13.05.2014, Stüben & Schütte (26)  
Note. The habitat of the beetles is forests and open areas with trees. The beetles prefer to eat needles, leaves, buds and young shoots / GenBank: KC784247.  
Distribution. Europe, Asia, Madeira.

***Trachyploeus laticollis* Boheman, 1842**

**Fig. 168.** I, Sardinia, 10km N Tortoli, N40°01'17" E09°41'19", 335 m, on rock face, lime, sifting under *Ceratonia siliqua*, *Euphorbia dendroides*, 20.3.2005, leg. Stüben (1), ♀.  
Distribution. Mediterranean, Canary Islands.

***Trachyploeus mariaesilvanae* Borovec, 2021**

**Fig. 169.** I, Sardinia, Campu Oddeu, 2 km N Urzulei, N40°6'21" E9°30'7", 957 m, leg. S. Wartmann, det. R. Borovec (Borovec 2021), ♀.  
Endemic. Sardinia.

**Hyperinae*****Brachypera crinita* (Boheman, 1834)**

**Fig. 221.** I, Sardinia, 3 km S La Caletta, 40°35'38.31"N, 9°45'4.85"E, 2 m, 21.5.2022, beach vegetation, leg. Stüben (48).  
Note. On Fabaceae, Asteraceae and Lamiaceae (see: East-CURCULIO Team 2010).  
Distribution. Mediterranean.

***Brachypera lunata* (Wollaston, 1854)**

**Fig. 222.** I, Sardinia, 3 km S Torralba, 40°28'48"N, 8°45'00"E, 383 m, 15.5.2022, leg. Wartmann, ♀. Illustration supplement. Aedeagus: Gran Canaria.  
Note. The weevils develop on *Geranium* species.  
Distribution. Mediterranean, Madeira.

***Coniatus tamarisci* (Fabricius, 1787)**

**Fig. 223.** I, Sardinia, 4km N San Vito: am Flumendosa, 39°28'38.47"N, 9°31'59.85"E, 15 m, 5.5.2022, *Tamarix*, leg. Stüben (11).

Note. On *Tamarix* / GenBank: KC784251; KC783834.  
Distribution. Mediterranean.

***Donus philanthus* (Olivier, 1807)**

**Fig. 224.** I, Sardinia, Berchiddeddu, 40°49'26.66"N, 9°27'14.74"E, 248 m, 15.5.2022, leg. Stüben (40).

Note. Fabaceae (*Hedysarum coronarium*), Asteraceae (*Carduus* spp.), Polygonaceae (*Rumex crispus*) and Rosaceae (*Sanguisorba*); see also East-CURCULIO Team 2010 / GenBank: KC784236.  
Distribution. Western Mediterranean.

***Hypera arator* (Linné, 1758)**

**Fig. 225.** I, Sardinia, 12 km NE Dorgali, near Galtelli, Monte Tuttavista, N40°22'46" E09°38'22", 720 m, limestone: sifted on top, under moss, 29.10.2004, leg. Stüben (35).

Note. On Caryophyllaceae: *Dianthus* spec.  
Distribution. Western Palaearctic.

***Hypera constans* (Boheman, 1834)**

**Fig. 226.** I, Sardinia, Mti. Gennargentu, 10km NW Lanusei: river Flumendosa, N39°56'17" E09°23'59", 660 m, 23.10.2004, leg. Germann, ♂.

Note. The biology and host plants are completely unknown.  
Distribution. Western Mediterranean.

***Hypera melancholica* (Fabricius, 1792)**

= *Hypera fuscocinerea* (Marsham, 1802)

**Fig. 227.** I, Sardinia, Costa Smeralda (Golfo Aranci: Spiaggia Bianca), 40°59'27.47"N, 9°35'34.86"E, 3 m, 18.5.2022, leg. Stüben (47), ♂. Illustration supplement. Aedeagus: France.

Note. *Hypera melancholica* (= *H. fuscocinerea*) develops on plants of six genera: *Anthyllis*, *Medicago*, *Melilotus*, *Trifolium*, *Trigonella* and *Vicia* (Fabaceae) (Skuhrovec 2005)  
Distribution. Western Palaearctic.

***Hypera meles* (Fabricius, 1792)**

**Fig. 228.** I, Sardinia, Berchiddeddu, 40°49'26.66"N, 9°27'14.74"E, 248 m, 15.5.2022, leg. Stüben (40).

Note. The larvae develop on plants of six genera: *Chrysoaspis*, *Dorycnium*, *Lotus*, *Medicago*, *Trifolium* and *Vicia* (Fabaceae; see: Skuhrovec 2003).  
Distribution. Western Palaearctic.

***Hypera nigrirostris* (Fabricius, 1775)**

**Fig. 229.** I, Sardinia, Berchiddeddu, 40°49'26.66"N, 9°27'14.74"E, 248 m, 15.5.2022, leg. Stüben (40)

Note. On *Trifolium* spp.  
Distribution. Western Palaearctic.

***Hypera postica* (Gyllenhal, 1813)**

**Fig. 230.** I, Sardinia, 4 km N Urzulei, 40° 7'10.82"N, 9°28'59.80"E, 890 m, 14.5.2022, sifting under *Quercus*, *Euphorbia characias*, *Genista* spec., leg. Stüben (38).

Note. On Fabaceae (sometimes injurious to alfalfa) / GenBank: KC784256.  
Distribution. Palaearctic; introduced in North America.

***Hypera venusta* (Fabricius, 1781)**

**Fig. 231.** I, Sardinia, 9 km SW Lanusei: Ulassai, N39°48'35" E09°29'48", 700 m, lime/rock face, 24.10.2004, leg. Stüben (22).

Note. *Trifolium* (*Chrysoaspis*). The species develops on plants of six genera: *Anthyllis*, *Chrysoaspis*, *Lotus*, *Onobrychis*, *Ulex* and *Vicia* (Fabaceae, see Skuhrovec 2005). Dieckmann (1989) also lists *Trifolium campestris* and *T. dubium* as a host plant / GenBank: KC784264.  
Distribution. Euro-Mediterranean.

***Limobius borealis* (Paykull, 1792)**

**Fig. 232.** I, Sardinia, 7 km E Padru, 40°47'25.24"N, 9°36'0.86"E, 115 m, 17.5.2022, meadow by stream, leg. Stüben (44)

Note. On *Erodium* and *Geranium*.  
Distribution. Euro-Mediterranean.



*Larinus carinirostris* and *Lixus scolopax* on *Carlina* (Sardinia, Berchiddeddu) - Photos: Stüben.

**Lixinae*****Larinus carinirostris* Gyllenhal, 1836**

**Fig. 233.** I, Sardinia, Berchiddeddu, 40°49'26.66"N, 9°27'14.74"E, 248 m, 15.5.2022, leg. Stüben (40), ♀.

Note. On *Carlina*.

Distribution. South and South-East Europe, Turkey.

***Larinus cynarae* (Fabricius, 1787)**

**Fig. 234.** I, Sardinia, 12km NW Guspini, near M. Arcuentu, N39°36'25" E08°30'46", 285 m, limestone rock: garrigue, 29.03.2005, leg. Stüben (26)

Note. On *Cynara cardunculus*.

Distribution. Mediterranean, South-East Europe.

***Larinus flavescens* Germar, 1824 (currently *L. scolyi* (Olivier, 1807))**

**Fig. 235.** I, Sardinia, 16km NE Iglesias, Monte Mannu, N39°22'52" E08°40'51", 545 m, Garrigue, 29.03.2005, leg. Stüben (25)

Note. On Asteraceae-Cardueae, oligophagous. Larvae and pupae in the flowers heads; the larvae feed in the fruits. The species has recently been listed as a senior synonym of *Larinus scolyi* (Olivier, 1807), only based on the original description (Gültekin, L. in: Löbl & Smetana 2013).

***Larinus jaceae* (Fabricius, 1775)**

**Fig. 236.** I, Sardinia, Berchiddeddu, 40°49'26.66"N, 9°27'14.74"E, 248 m, 15.5.2022, leg. Stüben (40), ♀.

Note. On *Carduus* and *Cirsium* species.

Distribution. Western Palaearctic.

***Larinus rusticanus* Gyllenhal, 1835**

**Fig. 237.** I, Sardinia, 7 km E Padru, 40°47'25.24"N, 9°36'0.86"E, 115 m, 17.5.2022, meadow by stream, leg. Stüben (44), ♀.

Note. The rostrum of the female in this species is much longer than in the species *L. planus* (Fabricius, 1792), which is widespread in Europe, whose 2nd antennal segment is not significantly longer than the 1st antennal segment as in *L. rusticanus*. According to Gültekin & Alonso-Zarazaga (2015), however, the latter taxon should be a synonym of *Larinus planus* (now *Larinus carlinae* (Olivier, 1807); Gültekin 2006, 2013), because "*Larinus planus* (Fabricius) sensu Germar, 1824 (Germar 1824: 389) is not *Curculio planus* Fabricius, 1792". However, this would have to be checked again on the basis of the type material. But it is more important in a second step to put a stop to such confusion of names (in German "Namensringtausch") in order to retain the previous and widespread use of names (such as *L. planus*; ICZN Art. 23.9.1.2 and 23.9.2) for reasons of stability (see Sprick et al. 2021).

Distribution. Mediterranean.

**Larinus scolymi** (Olivier, 1807) (currently *L. ochreatus* (Olivier, 1807))

**Fig. 238.** I, Sardinia, 12km NW Guspini, near M. Arcuentu, N39°36'25" E08°30'46", 285 m, limestone rock: garrigue, 29.03.2005, leg. Stüben (26)

Note. On Asteraceae-Cardueae, narrowly oligophagous (*Carduus* spp., *Scolymus hispanicus*).

Distribution. Euro- Mediterranean, Iran.

**Lixomorphus algirus** (Linné, 1758)

**Fig. 239.** I, Sardinia, Monte Albo: 1,5 km NE Lula, 40°28'48"N, 9°30'10"E, 510 m, 11.5.2022, leg. & det. Jacob, ♂.

Note. On *Rumex* (Colonnelli et al. 2011).

Distribution. Western Mediterranean.

**Lixus acicularis** Germar, 1824

**Fig. 240.** I, Sardinia, 22km NW Tortoli, 40°06'25"N, 9°30'9"E, 960 m, 21.3.2005, leg. Stüben (41).

Note. On Asteraceae (*Crepis*, *Dittrichia*, *Hedypnois*, *Limbarda*).

Distribution. Mediterranean.

**Lixus anguinus** (Linnaeus, 1767)

**Fig. 241.** I, Sardinia, 5 km SE Calangianus, 40°53'35.38"N, 9°13'56.81"E, 608 m, 16.5.2022, leg. Stüben (41), ♂.

Note. On crucifers.

Distribution. Western Mediterranean, Canary Islands.



*Lixus anguinus* on *Matthiola tricuspidata* (Sardinia, Kal'e Moru) - Photos: Stüben.

**Lixus cardui** (Olivier, 1808)

**Fig. 242.** I, Sardinia, 7 km NE Villasalto: near Grotta Su Pittiolu de Gospuru, 39°31'56.43"N, 9°26'35.50"E, 90 m, 8.5.2022, leg. Stüben (19).

Note. On thistle (*Onopordon*, *Cirsium*), ♂.

Distribution. Western Palaearctic.

**Lixus filiformis** (Fabricius, 1781)

**Fig. 243.** I, Sardinia, 1 km N Lotzorai, 39°58'24.24"N, 9°39'47.56"E, 8 m, 4.5.2022, *Galactites tomentosus*, leg. Stüben (3)

Note. On Asteraceae.

Distribution. Western Palaearctic.

**Lixus iridis** Olivier, 1807

**Fig. 244.** I, Sardinia, 5km E Villasalto: Domueu (by the stream), 39°29'32.94"N, 9°26'52.46"E, 53 m, 5.5.2022, leg. Stüben (10), ♀.

Note. On Apiaceae.

Distribution. Western Palaearctic.

**Lixus juncii** Boheman, 1836

**Fig. 245.** I, Sardinia, unterhalb Villasalto, 39°29'39.54"N, 9°24'9.21"E, 448 m, 5.5.2022, leg. Stüben (5B).

Note. Oligophagous on Amaranthaceae (e.g. *Atriplex* or *Spinacia oleracea*).

Distribution. Mediterranean, Eastern Europe.

**Lixus linearis** Olivier, 1807

= *L. cribricolis* Boheman, 1835

**Fig. 246.** I, Sardinia, Monte Albo: 1,5 km NE Lula, 40°28'48"N, 9°30'10"E, 510 m, 11.5.2022, leg. & det. Jacob, ♂. Illustration supplement. Aedeagus: Gran Canaria.

Note. On *Rumex* and *Emex*; often introduced.

Distribution. Mediterranean, Southern Europe, Canary Islands, Madeira.

**Lixus pulverulentus** (Scopoli, 1763)

**Fig. 247.** I, Sardinia, near Dorgali: Passo Littu, 40°17'59.33"N, 9°37'57.44"E, 323 m, 13.5.2022, *Cynara cardunculus*, leg. Stüben (35), ♂.

Note. Larvae in *Malva*, *Cirsium*; species in the *Dilixellus* subgenus live polyphagously on thistles.

Distribution. Mediterranean, Europe, Macaronesia

**Lixus punctiventris** Boheman, 1835

**Fig. 248.** I, Sardinia, 3 km S Torralba, 40°28'48"N, 8°45'00"E, 393 m, 15.5.2022, leg. & det. Wartmann, ♂.

Note. On Carduaceae (see Wanat 2011).

Distribution. Europe, Northwest Africa, Caucasus.

**Lixus scabricollis** Boheman, 1843

**Fig. 249.** I, Sardinia, Monte Albo: 1 km S Lula, 40°27'43.27"N, 9°29'21.70"E, 557 m, 11.5.2022, leg. Stüben (28), ♂.

Note. On Amaranthaceae, e.g. *Atriplex*, *Beta* and *Chenopodium* spp.

Distribution. Mediterranean, Southeastern Europe.

**Lixus scolopax** Boheman, 1835

**Fig. 250.** I, Sardinia, S Costa Rein: Cala Sinzias, 39°11'31.47"N, 9°33'44.13"E, 6 m, 7.5.2022, beach vegetation and meadow, leg. Stüben (18), ♀.

Note. On Carduaceae.

Distribution. Mediterranean, Eastern Europe.

**Lixus umbellatarum** (Fabricius, 1787)

**Fig. 251.** I, Sardinia, 5 km SE Calangianus, 40°53'35.38"N, 9°13'56.81"E, 608 m, 16.5.2022, leg. Stüben (41), ♀.

Note. On Apiaceae: e.g. *Ferula* and *Thapsia*.

Distribution. Mediterranean.

**Lixus vilis** (Rossi, 1790)

**Fig. 252.** I, Sardinia, 10,5 km NE Macomer: near Silanus, Massiv de Marghine, N40°18'55" E08°52'35", 930 m, 27.10.2004, leg. Stüben (31).

Note. On Asteraceae, Fabaceae and Geraniaceae (Colonnelli et al. 2011)

Distribution. Western Palaearctic.

**Mecaspis nana** Gyllenhal, 1834

**Fig. 253.** I, Sardinia, 6,5 km S Fonni, 40°4'14"N, 9°16'21"E, 1254 m, 13.10.2022, leg. Wartmann, ♂.

Distribution. Mediterranean, Asia (Iran).

**Mecaspis striatellus** (Fabricius, 1792)

**Fig. 254.** I, Sardinia, 21 km SE Aritzo, Barbagia Seulo: Monte Arqueri, N39°49'36" E9°22'27", 960 m, 26.10.2004, leg. Germann.

Distribution. Central and Eastern Europe, Mediterranean.

**Pseudocleonus carinatus** (Gyllenhal, 1834)

**Fig. 255.** I, Sardinia, 16 km NE Lula: Monte Albo, N40°33'30" E09°38'05", 750 m, Limestone/rock face, 19.10.2004, leg. Stüben (9), ♂. Illustration supplement.

Outline of the pronotum: *P. carinatus* versus *P. cinereus*.

Note. For determination see Skuhrovec et al. 2014.

Distribution. Western Mediterranean.

**Rhinocyllus conicus** (Froelich, 1792)

**Fig. 256.** I, Sardinia, Ballao, near river, 39°33'12.71"N, 9°21'20.47"E, 83 m, 5.5.2022, leg. Stüben (9).

Note. On Carduaceae.

Distribution. Western Europe.

**Mesoptiliinae**

**Magdalis armigera** (Fourcroy, 1785)

**Fig. 257.** I, Sardinia, 4 km E Gattelli, Fiume Cedrino, 40°23'58.71"N, 9°39'12.42"E, 10 m, 10.5.2022, wetland near river, leg. & det. Jacob, ♂.

Note. On *Ulmus*.

Distribution. Western Palaearctic.

## RAYMONDIONYMIDAE Reitter, 1913

*Derosasius damryi* cf. *sardous* Osella, 1977

**Fig. 258.** I, Sardinia, Ulàssai, N39°48'35" E9°29'48", 723 m, *Quercus*, sifting, 12.5.2014, leg. Stüben & Schütte, ♀.

Note. GenBank: MK892454.

Endemic: Sardinia.

*Raymondiiellus* cf. *doderoi* Gangelbauer, 1906

**Fig. 259.** I, Sardinia, NW Bosa: near Torre Argentina, *Ficus carica*, brook under bridge, sifting, N40°19'10" E8°27'41", 41 m, 15.05.2014, leg. Stüben & Schütte (32), ♀.♂. Illustration supplement. Aedeagus: same locality.

Note. GenBank: MK891639; MK891640.

Endemic: Sardinia.

*Raymondiiellus* cf. *vignai* Osella, 1977

**Fig. 260.** I, Sardinia, 15km NW Iglesias, Buggeru: coast, N39°25'10" E08°24'42", 10 m, garrigue, *Pistacia*, *Euphorbia*, sifting, 1.4.2005, leg. Stüben (34), ♂. Illustration supplement. Aedeagus: same locality.

Endemic: Sardinia.

## Acknowledgements

My thanks go primarily to the participants of the Sardinia excursion in 2022 (photo 1). I would like to thank my colleagues Roberto Caldara (Curculioninae), Jiri Krátký (Ceutorhynchinae), Helio Pierotti (Peritelini), Roman Borovec (Entiminae) and Karel Schön (Apionidae) for the subsequent control of my species identification. My special thanks also go to the employees of the molecular laboratory in the Alexander Koenig Museum (ZFMK, Bonn) and the research facility Senckenberg – German Entomological Institute (SDEI, Müncheberg) for the molecular analysis of the species collected by myself on Sardinia, whose mtCO1 barcodes will soon be deposited in GenBank. My final thanks go to my colleague Adrian Fowles (Wales) for his linguistic review of the manuscript.

## References

- Abbazzi, P., Colonnelli, E., Masutti, L., & Osella, G. (1995): Coleoptera Polyphaga XVI (Curculionoidea). In: Minelli, A., Ruffo, S. and La Posta, S. (eds.). - *Checklist delle specie della fauna italiana*, 61. Calderini, Bologna, 68 pp.
- Abbazzi P. & Maggini, L. (2009): Elenco sistematico-faunistico dei Curculionoidea italiani, Scolytidae e Platypodidae esclusi (Insecta, Coleoptera). - *Aldrovandia*, 5: 29–216.
- Abbazzi, P. & Zinetti, F. (2013): Elenco sistematico-faunistico dei Curculionoidea italiani, Scolytidae e Platypodidae esclusi (Insecta, Coleoptera). 2. Addenda e corrigenda. - *Memorie della Società Entomologica Italiana*, 90(2): 89–104.
- Borovec, R. (2021): Three new species of *Trachyphloeus* from Sardinia (Coleoptera: Curculionidae: Entiminae: Trachyphloeini). - *Klapalekiana*, 57: 219–230, 2021.
- Caldara, R. (2008): Revisione delle specie paleartiche del genere *Gymnetron* (Insecta, Coleoptera, Curculionidae). - *Aldrovandia* 4: 27 – 103.
- Caldara, R. (2007): Taxonomy and phylogeny of the species of the weevil genus *Miarus* Schönherr, 1826 (Coleoptera: Curculionidae, Curculioninae). - *Koelopterologische Rundschau* 77: 199-248.
- Caldara, R. & Fogato, V. (2013): Systematics of the weevil genus *Mecinus* Germar, 1821 (Coleoptera: Curculionidae). I. Taxonomic treatment of the species. - *Zootaxa* 3654 (1): 1-105.
- Colonnelli, E. (2004): Catalogue of Ceutorhynchinae of the World, with a key to genera (Insecta: Coleoptera: Curculionidae). Argania editio, Barcelona, 124 pp.
- Colonnelli, E. & Osella, G. (2009): New data on some Curculionoidea (Coleoptera: Anthribidae, Apionidae, Curculionidae) from Sardinia, pp. 421–426. - In: Cerretti, P., Mason, F., Minelli, A., Nardi, G. & Whitmore, D. (eds). Research on the Terrestrial Arthropods of Sardinia (Italy). - *Zootaxa* 2318.
- Colonnelli, E., Osella, B. G. & Cornacchia, P. (2011): Records of Curculionoidea from the region-owned forest of Marganai and other localities of centraisouthern Sardinia ( Coleoptera: Anthribidae, Attelebidae, Rhynchitidae, Apionidae, Nanophytidae, Brachyceridae, Curculionidae, Raymondionymidae, Dryophthoridae). - *Conservazione Habitat Invertebrati* 5: 581–607.
- CURCULIO Team. (2006): Digital-Weevil-Determination for Curculionoidea of West Palaearctic. *Transalpina: Sitona* (Entiminae: Sitonini) - *SNUDEBILLER, Studies on taxonomy, biology and ecology of Curculionoidea*, 7, No. 85: 14-20, Mönchengladbach: CURCULIO-Institute.
- CURCULIO Team (2007): Digital-Weevil-Determination for Curculionoidea of West Palaearctic. *Transalpina: Baris / Limnobaris* (Baridinae: Baridini) - *SNUDEBILLER, Studies on taxonomy, biology and ecology of Curculionoidea* 8, No. 97: 12-18, Mönchengladbach: CURCULIO-Institute.
- CURCULIO Team (2008): Digital-Weevil-Determination for Curculionoidea of West Palaearctic: *Acalyptus / Ellescus / Dorytomus* (Curculioninae: Acalyptini & Ellescini) - *SNUDEBILLER, Studies on taxonomy, biology and ecology of Curculionoidea*, 9, No. 107: 11-18, Mönchengladbach: CURCULIO-Institute.
- CURCULIO Team (2010): Digital-Weevil-Determination for Curculionoidea of West Palaearctic. *Transalpina: Tychius* (Curculioninae: Tychiini) - *SNUDEBILLER, Studies on taxonomy, biology and ecology of Curculionoidea* 11, No. 149: 27-39, Mönchengladbach: CURCULIO-Institute.
- Dieckmann, L. (1989): Die Zucht mitteleuropäischer Hyperini – Arten (Coleoptera, Curculionidae). - *Entomol. Nachr. Ber.*, 33: 97-102.
- East-CURCULIO Team (2010): Digital-Weevil-Determination for Curculionoidea of West Palaearctic. *Transalpina: Brachypera / Donus* (Hyperinae: Hyperini) - *SNUDEBILLER, Studies on taxonomy, biology and ecology of Curculionoidea*, 11, No. 151: 102-108, Mönchengladbach: CURCULIO-Institute.
- Germann, C. (2005): Report on two excursions of the Curculio-Institute to Sardinia in October 2004 and March 2005 with a complete weevil species list (Coleoptera: Curculionoidea) - and special regard to Cryptorhynchinae. - *Weevil News*: <http://www.curci.de/Inhalt.html>, No. 32: 5 pp., CURCULIO-Institute: Mönchengladbach. (ISSN 1615-3472).
- Giusto C (1992): *Aspidapion* (s. str.) *caprai* n. sp. dell'Italia centro-meridionale (Coleoptera: Apionidae: Apioninae). - *Memorie della Società Entomologica Italiana* 71 : 551-558.
- Gosik, R., Hirsch, J., Sprick, P. (2010): Biology and molecular determination of *Pachyrhinus lethierryi* (Desbrochers, 1875) with description of the mature larva and pupa (Coleoptera, Curculionidae, Entiminae: Polydrusini) - *SNUDEBILLER, Studies on taxonomy, biology and ecology of Curculionoidea*, 11, No. 156: 80-95, Mönchengladbach: CURCULIO-Institute.
- Gültekin, L. (2006): On some Lixinae types of I.C. Fabricius (Coleoptera, Curculionidae). - *Fragmenta Entomologica* 38 (1): 111-133.
- Gültekin, L. (2013): Curculionidae: Lixinae: Lixini: 102-110. - in: Löbl, I & A. Smetana (eds): Catalogue of Palaearctic Coleoptera. Vol. 8. Leiden, Brill, 700 pp.
- Gültekin, L. & Alonso-Zarazaga, M. A. (2015): A review of the Palaearctic species of *Larinus* Dejean (Coleoptera: Curculionidae) in C. J. Schoenherr collection: nomenclature and lectotype designations. - *Journal of Insect Biodiversity* 3(9): 1-26.
- Hoffmann, A. (1950): Coléoptères Curculionides (Première Partie). *Faune de France* 52.- Lechevalier, Paris: 1-486, Fig. 1-225.
- Hoffmann, A. (1958): Coléoptères Curculionides (Troisième partie). - *Faune de France* 62. Lechevalier, Paris, 1208-1839 pp.
- Krehenwinkel, H., Weber, S., Künzel, S., Kennedy, S.R. (2022): The bug in a teacup—monitoring arthropod–plant associations with environmental DNA from dried plant material. - *Biol. Lett.* 18: 20220091. <https://doi.org/10.1098/rsbl.2022.0091>.
- Koch, K. (1992): Die Käfer Mitteleuropas. Ökologie 3. Goecke & Evers, Krefeld, 389 pp.
- Lafage, D., Elbrecht, V., Cuff, J.P., Steinke, D., Hambäck, P.A., Erlandsson, A. (2020): A new primer for metabarcoding of spider gut contents. - *Environ. DNA* 2: 234–243. (doi:10.1002/edn3.62).
- Meierotto, S., Sharkey, M.J., Janzen, D.H., Hallwachs, W., Hebert, P.D.N., Chapman, E.G. & Smith, M.A. (2019): A revolutionary protocol to describe understudied hyperdiverse taxa and overcome the taxonomic impediment. - *Dtsch. Entomol. Z.* 66 (2): 119-145.
- Mulcahy D.G., Ibañez R., Jaramillo, C.A., Crawford, A.J., Ray, J.M., Gotte, S.W., et al. (2022): DNA barcoding of the National Museum of Natural History reptile tissue holdings raises concerns about the use of natural history collections and the responsibilities of scientists in the molecular age. - *PLoS ONE* 17(3): e0264930. <https://doi.org/10.1371/journal.pone.0264930>
- Pierotti, H. & Bellò, C. (1996): Le Pseudomeira della fauna sardo-corsa (Coleoptera Curculionidae Polydrosinae). 4. Contributo alla conoscenza della Tribù Peritelini. - *BIOGEOGRAPHIA* - Vol. XVIII: 523-545.
- Pierotti, H. & Bellò C. (2000): Contributi al riordinamento sistematico dei Peritelini paleartici. III. Revisione del gen. *Dolichomeira* Solari, 1954 (Coleoptera Curculionidae Polydrosinae). - *Bollettino del Museo Civico di Storia Naturale di Verona*, 24, Botanica Zoologia: 129-192
- Pierotti, H. & Bellò C. (2006): Contributi al riordinamento sistematico dei Peritelini paleartici. VII. Revisione del genere *Simo* Dejean, 1821, con descrizione di un nuovo genere e di dieci nuove specie. (Coleoptera: Curculionidae: Entiminae). - *SNUDEBILLER, Studies on taxonomy, biology and ecology of Curculionoidea*, 7, No. 87: 28-70, Mönchengladbach: CURCULIO-Institute.

- Pierotti, H. (2011):** Contributi al riordinamento sistematico dei Peritelini W-paleartici. VIII. Revisione delle specie europee del genere *Heteromeira* Solari, 1955 (Coleoptera, Curculionidae, Entiminae). - *Bulletin de la Société entomologique de France*, **116** (2): 195-239.
- Russell, M. (2004):** Apionidae of the Western Palaearctic. Volume 2. Piezotrachelini (I). *Protapion* Schilsky, 1908. Crocodile Press, Peterborough, [3, unnumbered] + 50 pp. + 24 pls.
- Sharkey, M.J., Janzen, D.H., Hallwachs, W., Chapman, E.G., Smith, M.A., Dapkey, T., Brown, A., Ratnasingham, S., Naik, S., Manjunath, R., Perez, K., Milton, M., Hebert, P., Shaw, S.R., Kittel, R.N., Solis, M.A., Metz, M.A., Goldstein, P.Z., Brown, J.W., Quicke, D.L.J., Achterberg, C. van, Brown, B.V. & Burns, J.M. (2021):** Minimalist revision and description of 403 new species in 11 subfamilies of Costa Rican braconid parasitoid wasps, including host records for 219 species. - *Zookeys* 1013: 1-665.
- Skuhrovec, J. (2003):** Rozšíření nosatců rodu *Hypera* (Coleoptera: Curculionidae) na území České republiky (Distribution of weevils of the genus *Hypera* (Coleoptera: Curculionidae) in the Czech Republic). - *Klapalekiana*, **39**: 69-125 (in Czech, English summary).
- Skuhrovec, J. (2005):** Živné rostliny nosatců rodu *Hypera* (Coleoptera: Curculionidae) vyskytujících se na území České republiky / Host plants of weevils of the genus *Hypera* (Coleoptera: Curculionidae) occurring in the Czech Republic. - *Klapalekiana*, **41**: 215-255.
- Skuhrovec, J., Schön, K., Stejskal, R., Gosik, R., Kresl, P. & Trnka, F. (2012):** Digital-Weevil-Determination for Curculionidae of West Palaearctic. **Rhynchitidae and Attelabidae**. - *SNUDEBILLER: Studies on taxonomy, biology and ecology of Curculionidae* **13**, No. **193**: 138-161, CURCULIO-Institute: Mönchengladbach.
- Skuhrovec, J., Gosik, R. & Caldara, R. (2014a):** Immatures of Palaearctic species of the weevil genus *Tychius* (Coleoptera, Curculionidae): new descriptions and new bionomic data with an evaluation of their value in a phylogenetic reconstruction of the genus. - *Zootaxa* 3839 (1): 1-83.
- Skuhrovec, J., Stejskal, R., Trnka, F. & Gosik, R. (2014b):** Digital-Weevil-Determination for Curculionidae of West Palaearctic. **Cleonini (Lixinae)**. - *SNUDEBILLER: Studies on taxonomy, biology and ecology of Curculionidae* **15**, No. **227**, 18 pp., CURCULIO-Institute: Mönchengladbach.
- Sprick, P., Behne, L. & Maus, C. (2021):** Rote Liste und Gesamtartenliste der Rüsselkäfer (i. e. S.) Deutschlands (Überfamilie Curculionidae, exklusive Anthribidae, Scolytidae, Platypodidae). - In: Ries, M; Balzer, S.; Gruttker, H.; Haupt, H.; Hofbauer, N.; Ludwig, G. & Matzke-Hajek, G. (Red.): Rote Liste gefährdeter Tiere, Pflanzen und Pilze Deutschlands, Band 5: Wirbellose Tiere (Teil 3). - Münster (Landwirtschaftsverlag). - *Naturschutz und Biologische Vielfalt* **70** (5): 335-412.
- Stüben, P.E., Sprick, P., Müller, G., Bayer, Ch., Behne, L. & Krátky, J. (2012):** Digital-Weevil-Determination for Curculionidae of West Palaearctic. **Transalpina: Ceutorhynchinae (1. Part)**. (*Mononychini, Phytobiini, Hy-purini, Cnemogonini, Scleropterini & Amalini*) - *SNUDEBILLER: Studies on taxonomy, biology and ecology of Curculionidae* **13**, No. **192**: 18-33, CURCULIO-Institute: Mönchengladbach.
- Stüben, P.E., Müller, G., Krátky, J., Bayer, Ch., Behne, L. & Sprick, P. (2013):** Digital-Weevil-Determination for Curculionidae of West Palaearctic: **Transalpina: Ceutorhynchinae (2. Part)**. (*Ceuthorhynchini: Amalorrhynchus, Drupenatus, Poophagus, Coeliodes, Pseudocoeliodes, Coeliodinus, Eucoeliodes, Neoxyonyx, Thamiocolus, Micrelus, Zacladus, Phrydiuchus, Stenocarus, Nedyus, Ceutorhynchus: Marklissus*) - *SNUDEBILLER: Studies on taxonomy, biology and ecology of Curculionidae* **14**, No. **210**: 23 pp., CURCULIO-Institute: Mönchengladbach.
- Stüben, P.E. (2014):** New nomenclatural and taxonomic acts, and Comments (2014) - *SNUDEBILLER: Studies on taxonomy, biology and ecology of Curculionidae* **15**, No. **231**: 5pp., CURCULIO-Institute: Germany / Mönchengladbach.
- Stüben, P.E., Schütte, A., Bayer, Ch., & Astrin, J.J. (2015):** The Molecular Weevil Identification Project (Coleoptera: Curculionidae), Part II. Towards an Integrative Taxonomy. - *SNUDEBILLER: Studies on taxonomy, biology and ecology of Curculionidae* **16**, No. **237/238 (Supplement)**: 294 pp., CURCULIO-Institute: Mönchengladbach.
- Stüben, P.E., Bayer, Ch., Bahr, F., Sprick, P., Braunert, C. & Behne, L. (2016):** Digital-Weevil-Determination for Curculionidae of the West Palaearctic: **Transalpina: Apionidae I - Apionini & Ceratapiini**. - *SNUDEBILLER: Studies on taxonomy, biology and ecology of Curculionidae* **17**, No. **254**: 26 pp., CURCULIO-Institute: Mönchengladbach.
- Stüben, P.E., Bayer, Ch., Sprick, P. & Braunert, C. & Behne, L. (2018):** Digital-Weevil-Determination for Curculionidae of the West Palaearctic: **Transalpina: Apionidae IV - Oxystomatini pars (blue and greenish species)**. *SNUDEBILLER: Studies on taxonomy, biology and ecology of Curculionidae* **19**, No. **268**: 29pp., CURCULIO-Institute: Mönchengladbach.
- Stüben, P.E. (2018a):** The Cryptorhynchinae of the Western Palaearctic / Die Cryptorhynchinae der Westpalaearktis. Curculio Institute: Mönchengladbach: 58 pp.
- Stüben, P.E. (2018b):** Kritische Anmerkungen zu den neuen Curculionidae-Katalogen - nomenklatorische und taxonomische Änderungen (2018), (Coleoptera, Curculionidae) - *SNUDEBILLER: Studies on taxonomy, biology and ecology of Curculionidae* **19**, No. **275**: 13pp., CURCULIO-Institute: Germany, Mönchengladbach.
- Stüben, P.E. (2022):** Weevils of Macaronesia - Canary Islands, Madeira, Azores, Curculio Institute: Mönchengladbach: 784 pp.
- Wanat, M. (2011):** Biology and distribution of *Lixus punctiventris* Boheman, 1835 (Coleoptera, Curculionidae) in Poland. - *Weevil News*: <http://www.curci.de>, **64**: 5 pp., CURCULIO-Institute: Mönchengladbach.

## Appendix 1

### Some new mtCO1 sequences (barcodes) of Curculionidae from Sardinia

*Aspidapion cf. caprai* (Giusto, 1992): Sardinia, 7.5km S. Orsei

>3839-PST

AACCTTATATTTATTTTGGGATTTGATCAGGATTAATTGGAACATCCTTAAGTATATTAATTCGAATTGAATTAGGAAACCAGGGTCATTAATTGGAGATGATCAAA  
TTATAATGTAATTATTACAGCTCAGCCTTATTATAATTTTTTTTATAGTAATACCTATTATAAATTGGAGGTTTGGAAATTGATTAATCCACTAATATTAGGAGCTCCT  
GATATGGCATTCCCTCGTTAAATAATAAGATTGATTATTACCACCTTCTTACTCTTTTATAAAGAAGAATTGTTGAAAAGGAAGCTGGAACAGGTTGAAC  
TGTTTATCCTCCTTTAGCCGCTAATATTGCCATAGAGGAGCATCAGTTGATTAGCTATTTTAGGCTTCACTTACTGGAATTTCTCAATTTTAGGAGCAGTAAAT  
TTATTTCAACTATAATAATAATAACAACCAATAGGACTATCATTAGATCAACTTTCCCTTATTTTACTGAGCAGTAAAAAATTAAGTCAATTTCTACTTTTATCCAGT  
TTAGCTGGGGCTATTACTATGCTATTAAGTATGCTAATAACAATACTTCTTTTTTGGACCCGAGGAGGAGGGATCCAATTTTATACCAGCATTTATTT

*Exapion fulvum* (Desbrochers, 1895): Sardinia, Passo Ghenna'e Silana

>3758-PST

AACCTTGTACTTTATTTTGGTTTATGATCAGGATATAGCAGGAACCTCTTAAGAATATTAATTCGATTGAATTAGGAAATCCAGGATCTTTAATTGGAGACGATCAAA  
TTATAATGTTATTGTTACAGCTCAGCCTTATTATAATTTTTTTTATAGTATACCTATWATAAATTGGTGGATTGGAAATTGATTAATTCCTTTAATATTAGGGGCTC  
CTGATATAGCTTTTCCACGTATAAATAATAAGATTTGACTTCTACCGCTTCTTTAAGTATTTAATAAGAAGAATTGTTGAAAAGGAGTAGGAACAGGGTGA  
ACTGTTTACCCCTTACTAGCTGCAATGTTGCTCATAGAGGAGCCTCAGTTGATCTAGCAATTTTACTGCTACATTTAGCTGGTATTTTACTTATTTAGGACGATGAA  
ATTTTATCCTACTACTATAATAATAACAACCAATAGGCTTTCTTTTACTGAGCAGTAAAAAATTAAGTCAATTTCTACTTTTATCCAGTCTTTTACTTTTACC  
TGTGTTAGCAGGGGCAATTACTATATTATAACAGATCGAAACATAACACTTCTTTCTTTGATCTGCTGGAGGAGGAGACCAATTTTATACACATTTATTT

*Taeniapion rufulum* (Wencker, 1864): Sardinia, Armungia

>3763-PST

TACTTTATATTTATTTTGGGATTTATCAGGATTAATTGGCACATCTTTAAGAATATTAATTCGAATTGAATTAGGAAATCCAGGATCTTTAATTGGTATGATCAAA  
TTATAATGTTATTATTACAGCTCAGCCTTATTATAATTTTTTTTATAGTATACCTATTATAAATTGGAGGTTTGGAAATTGACTAATTCCTTTAATATTAGGAGCCCCA  
GATATAGCATTCCCGAATAAATAACATAAGATTTGATTATTACCCCATCTCTTTCTTTTATAAAGAAGAATTGTTGAAAAGGAGGCTGGAACAGGATGAAC  
TGTTTACCCCTTACTAGCTTCAATATTGCTCATAGAGGAGCCTCTGTAGATTAGCAATTTTACTGCTTACTTTAGCTGGAATTTCTCAATTTTAGGACGCTGAA  
TTATTTCAACAATWATAAATAATAACAACCAATAGGCTTTCTTTTACTGAGCAGTAAAAAATTAAGTCAATTTCTACTTTTATTTATTTATCTTTACTGTT  
TTAGCTGGAGCTATTACCATATTATAACTGATCGAAATACAATACTTCTTTTTTGGACCTGCAGGAGGAGGATCCTATTTTTATCCACATTTATTT



## Werden Sie Autor unserer neuen CURCI-Kataloge Ein Angebot an unsere Mitglieder

Sie wollten schon immer - neben ihrer Sammlung - die Rüsselkäfer ihrer Region, ihrer Lieblingsgruppe oder einer Pflanzenfamilie in Wort und Bild an Interessenten im Internet weiterreichen, dann sollten sie jetzt auf unsere einheitlich gestalteten CURCI-Kataloge zurückgreifen, die ihnen für kleines Geld vollumfänglich auf der CURCI-Web-Seite zur Verfügung gestellt werden. Für jeden und jedes Team sollte auf unserer Internetseite „Le Charançon“ etwas dabei sein. Nicht umfassende Paläarktis- oder Europa-Kataloge, die niemand mittelfristig füllen und unterhalten kann, sind dabei das Ziel, sondern ‚fein & klein‘ sollten sie sein - **Ihre** Kataloge, denn small is beautiful!

- **Taxa-Kataloge:** Die Rüsselkäfer ihrer Neigung (Artenkenntnisse auf jeder taxonomischen Stufe, von der Gattung bis zur Unterfamilie, dürften auf reges Interesse stoßen);
- **Faunenkataloge:** Die Rüsselkäfer ihrer Region, ihres Departments, ihrer Urlaubs- und Lieblingsinsel oder ihres Sammel- und Wandergebirges;
- **Wirtspflanzen-Kataloge:** Die Rüsselkäfer der unterschiedlichen Pflanzenfamilien (z.B. an Fabaceae, Rosaceae, Brassicaceae oder Distelgewächsen);
- **Biotop-Kataloge:** Die Rüsselkäfer eines Lebensraumes oder einer Vegetationszone (z.B. einer Trockenwiese, eines Gewässers oder Laubwaldes);
- **Larven-Kataloge** - oder was sie schon immer beschäftigt hat (in ihrem Kräutergarten, auf dem Balkon oder sogar im Stadtpark ihrer Großstadt).

Sie wählen Ihr ganz eigenes Katalog-Thema! Die ausgefallensten Ideen – wissenschaftlich gut begründet - sind uns gerade recht. Sie lassen uns teilnehmen an ihren Ideen und Vorstellung, wie man endlich einen Rüsselkäfer-freundlichen, heimischen Garten gestaltet oder die Wanderung in den Alpen zu einem großartigen Rüsselkäfer- und Wirtspflanzen-Erlebnis werden lässt. Selbst wenn sie sich in diesem Mikrokosmos ihres selbst gesteckten Erlebnisrahmens mit ihrer Kamera bewegen, ist dabei Arbeitsteilung oft ein großer Vorteil. Zögern sie daher nicht, besprechen sie ihre Katalog-Ideen mit Freunden und Kollegen im CURCULIO-Institut, bilden sie kleine Katalog-Teams. Da ist der leidenschaftliche Photograph, der akribisch arbeitende Fundort-Listen-Ersteller und/oder der zuverlässige Webmaster, der uns im Internet an ihren Entdeckungen zeitnah teilnehmen lässt. Und machen sie sich bitte klar, was Teamarbeit noch alles bedeutet, denn Kataloge müssen unterhalten werden und finden selten einen Abschluss. So werden sie praktisch zwangsläufig **gemeinsam** Exkursionen planen und durchführen (müssen), voneinander lernen und von Zeit zu Zeit uns allen von ihren Leidenschaften und Entdeckungen in den *Weevil News* berichten.

Sie haben als CURCI Mitglied und Katalog-Autor für ihre Arbeit den exklusiven Zugriff auf unsere ca. 20.000 PDFs umfassende Rüsselkäfer-Bibliothek (praktisch vollständig bis 2020). Das bietet ihnen ansonsten weltweit niemand! Zögern sie daher nicht uns zu kontaktieren. Bewerben sie sich um einen Platz auf unserer Katalogseite ‚Le Charançon‘. Wir halten für sie bereits einen Projektplanungsbogen und ein Katalog-Bedienungsvideo bereit. Wir stehen ihnen mit Rat und Tat während ihrer ganzen Katalog-Lebenszeit zur Seite, wenn sie es wünschen.

Im Frühjahr 2023, Chefreakteur: Le Charançon  
**Peter E. Stüben**

Kontakt: [Curculio@t-online.de](mailto:Curculio@t-online.de)  
Oder: [P.Stueben@t-online.de](mailto:P.Stueben@t-online.de)